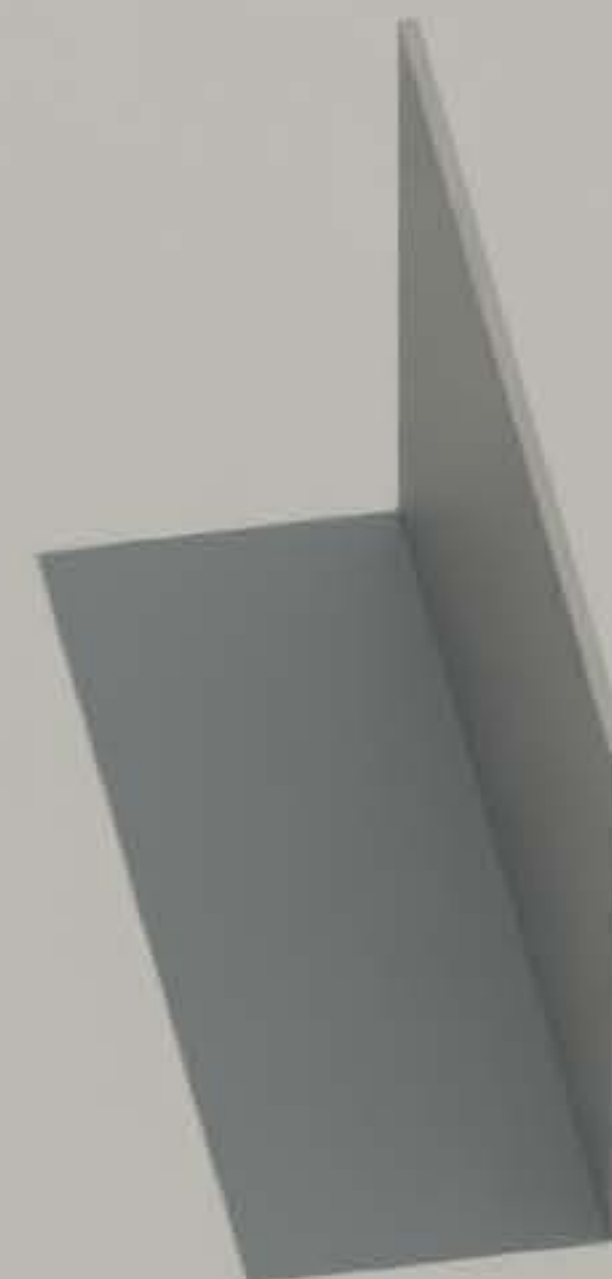
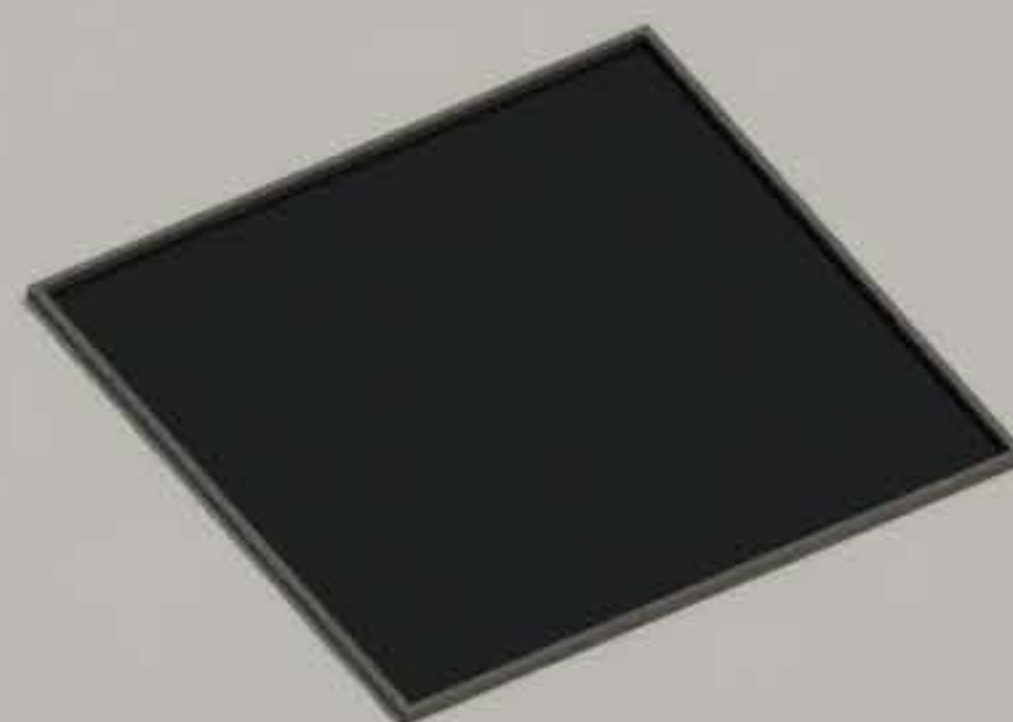
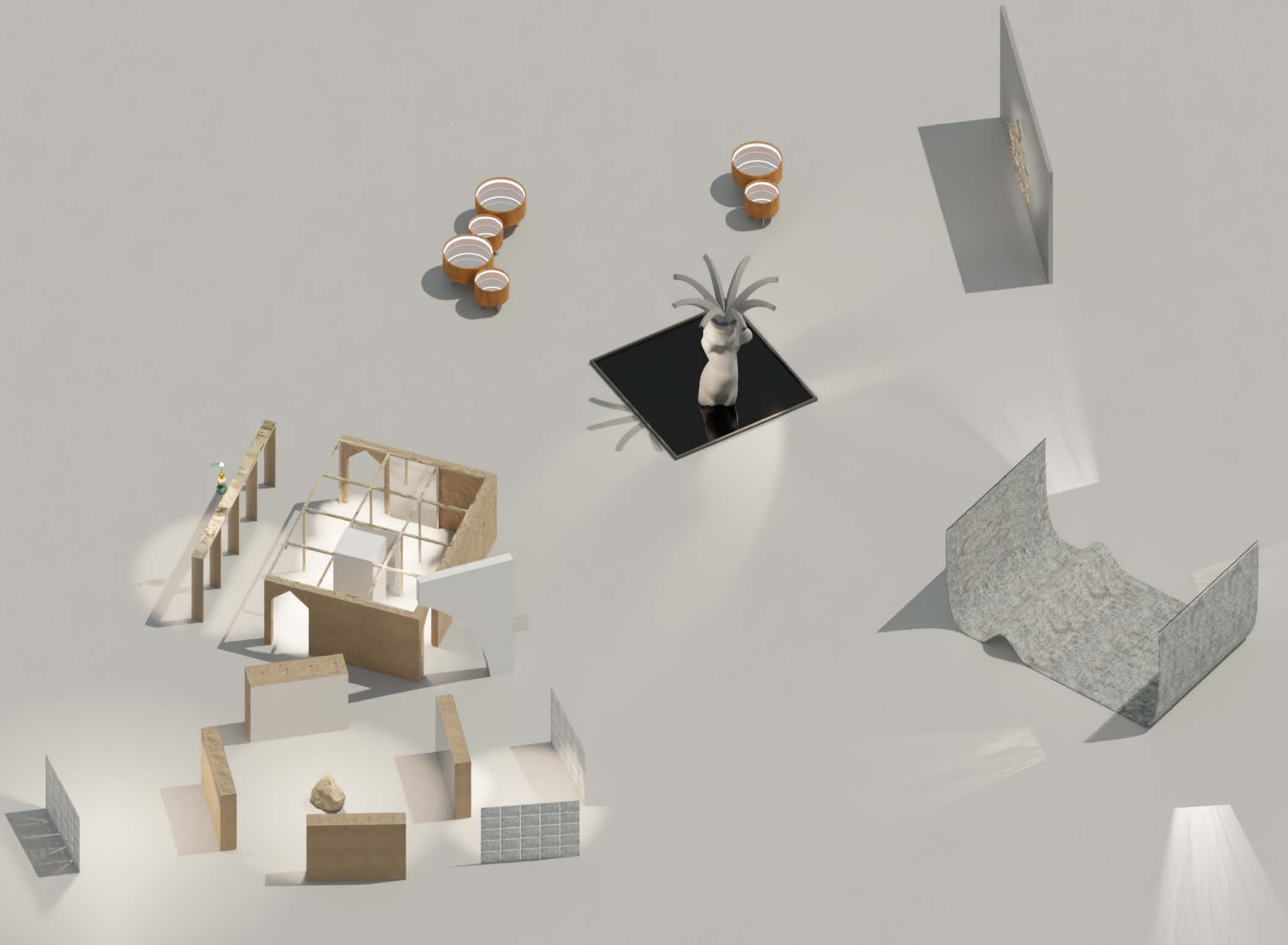


ANEXO 2. INFOGRAFÍAS Y FOTOS



















DEJA VECÚ

Asunción Molinos Gordo

Lorem ipsum dolor sit amet, consectetur adipiscing
sed do eiusmod tempor incididunt ut labore et d
magna aliqua.

Ut enim ad minim veniam, quis nostrud exercitat
ullamco laboris nisi ut aliquip ex ea commodo co

Duis aute irure dolor in reprehenderit in volupta
esse cillum dolore eu fugiat nulla pariatur.

Excepteur sint occaecat cupidatat non proident,
culpa qui officia deserunt mollit anim id est labor

lipiscing elit,
e et dolore

rcitation
do consequat.
luptate velit

lent, sunt in
laborum.































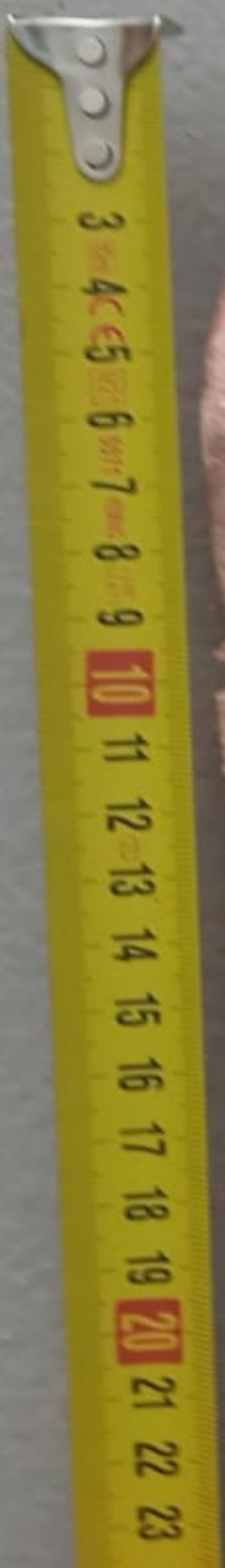
















Handwritten text in Arabic script on a palm-leaf manuscript. The text is arranged in approximately 12 horizontal lines across the leaf. The script is a cursive style, likely Maghrebi or Maghribi, with some characters appearing to be in a different script, possibly Punic or Phoenician, interspersed with the Arabic. The leaf is light brown and shows signs of wear and aging. The text is written in dark ink or pigment.

