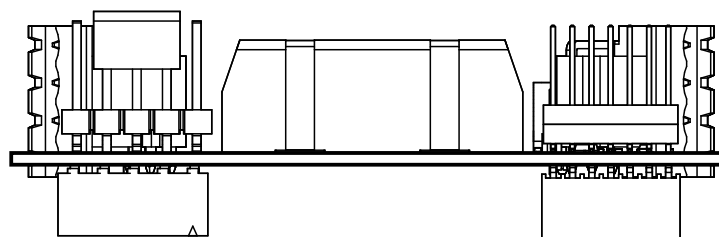
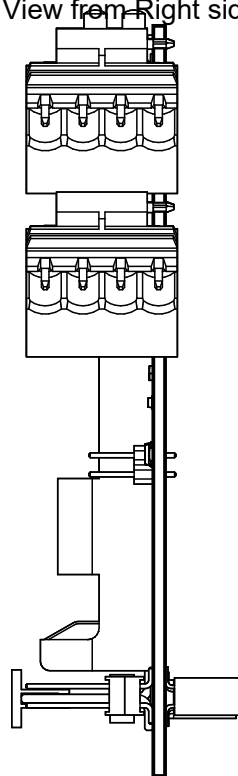


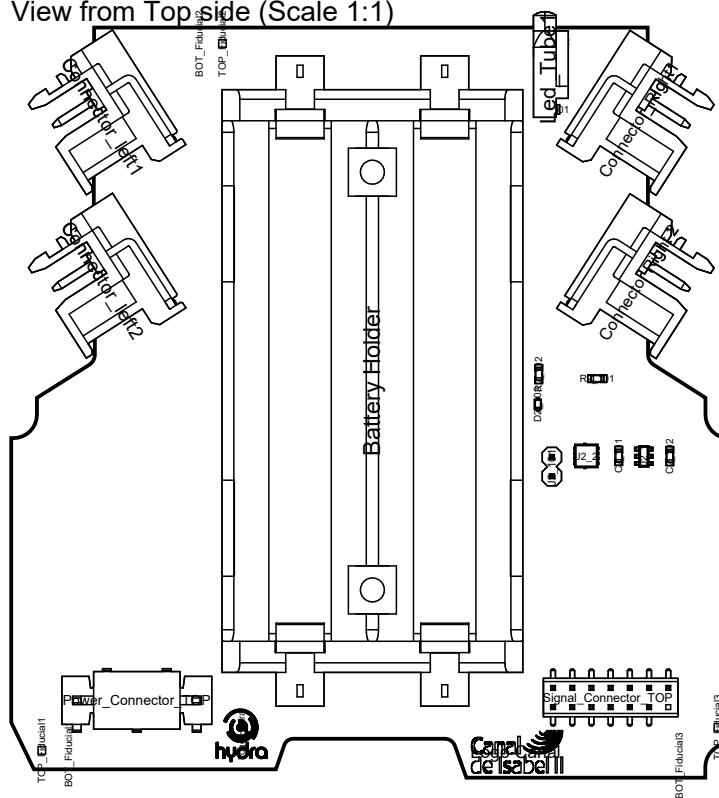
View from Front side (Scale 1:1)



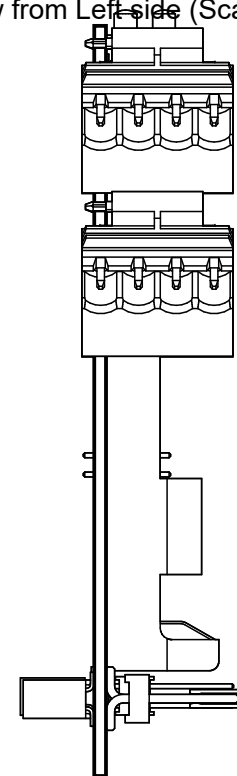
View from Right side (Scale 1:1)

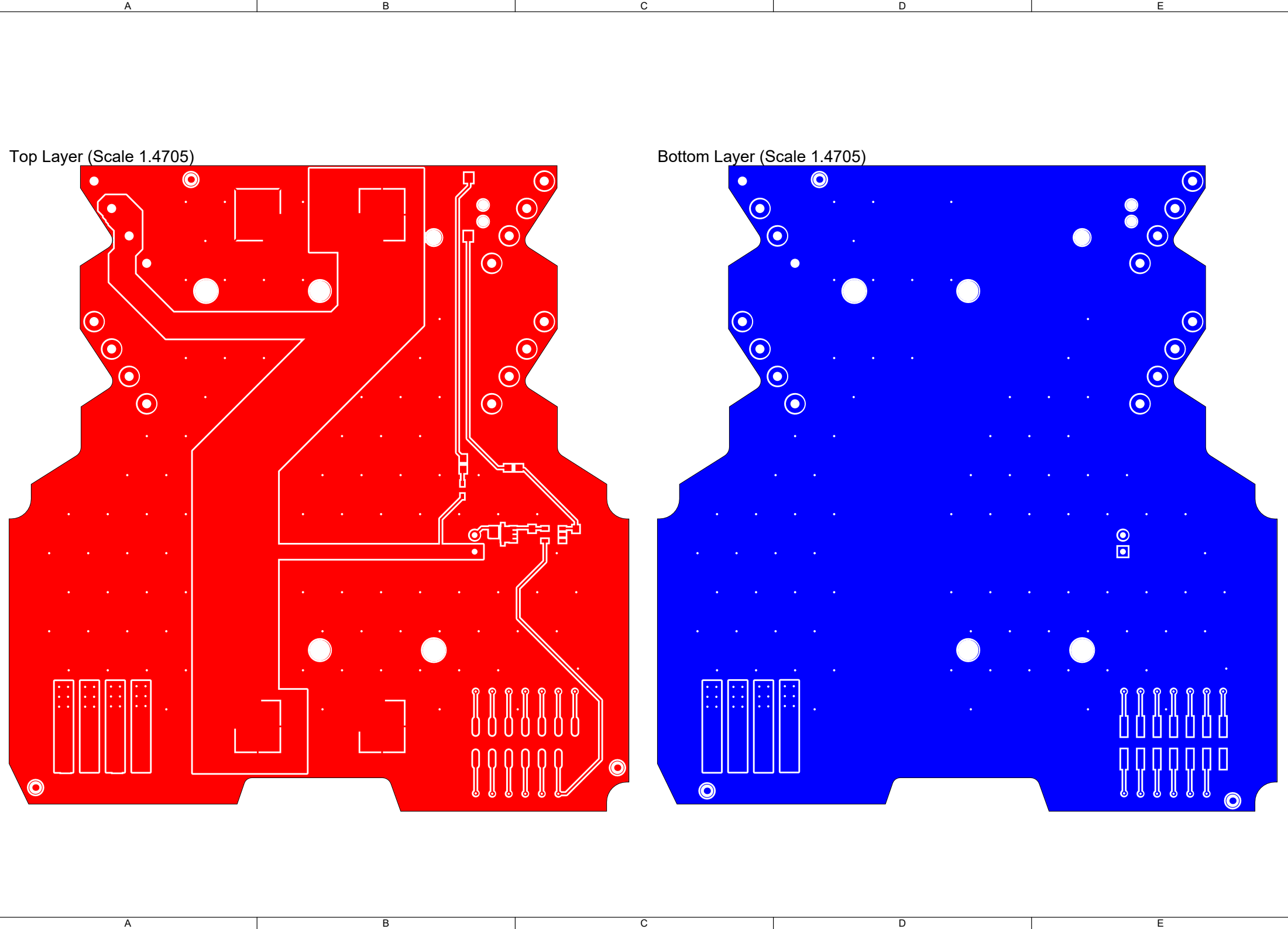


View from Top side (Scale 1:1)



View from Left-side (Scale 1:1)





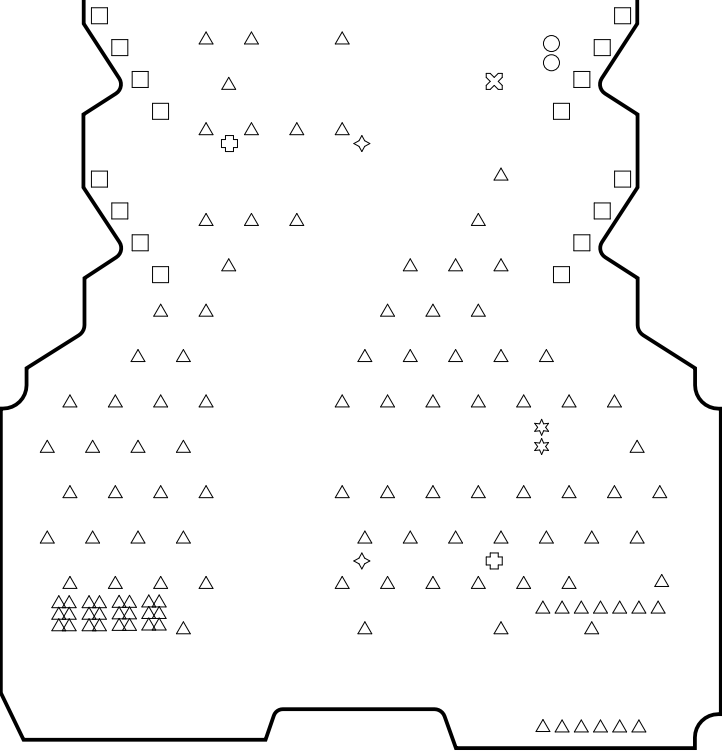
Layer Stack Legend



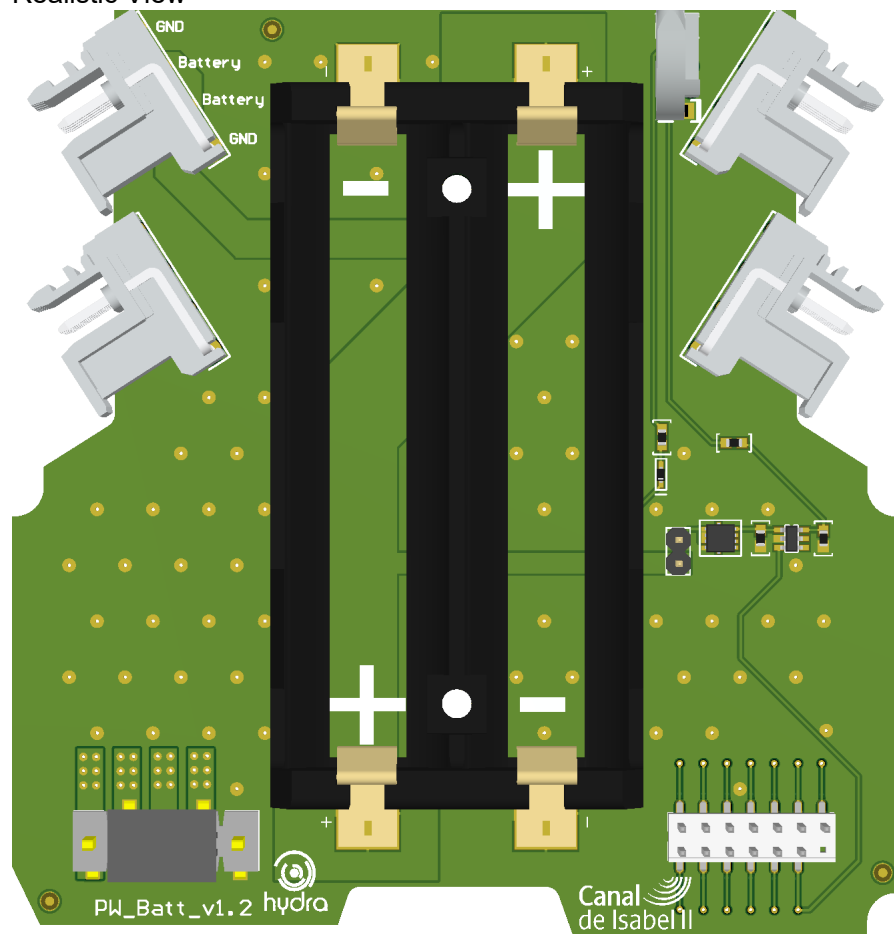
Drill Table

Symbol	Count	Hole Size	Plated	Hole Tolerance
△	120	0.35mm	Plated	
☆	2	0.90mm	Plated	
□	16	1.40mm	Plated	
○	2	1.55mm	Plated	
⊗	1	2.39mm	Non-Plated	
◇	2	3.17mm	Non-Plated	
⊕	2	3.45mm	Non-Plated	
145 Total				

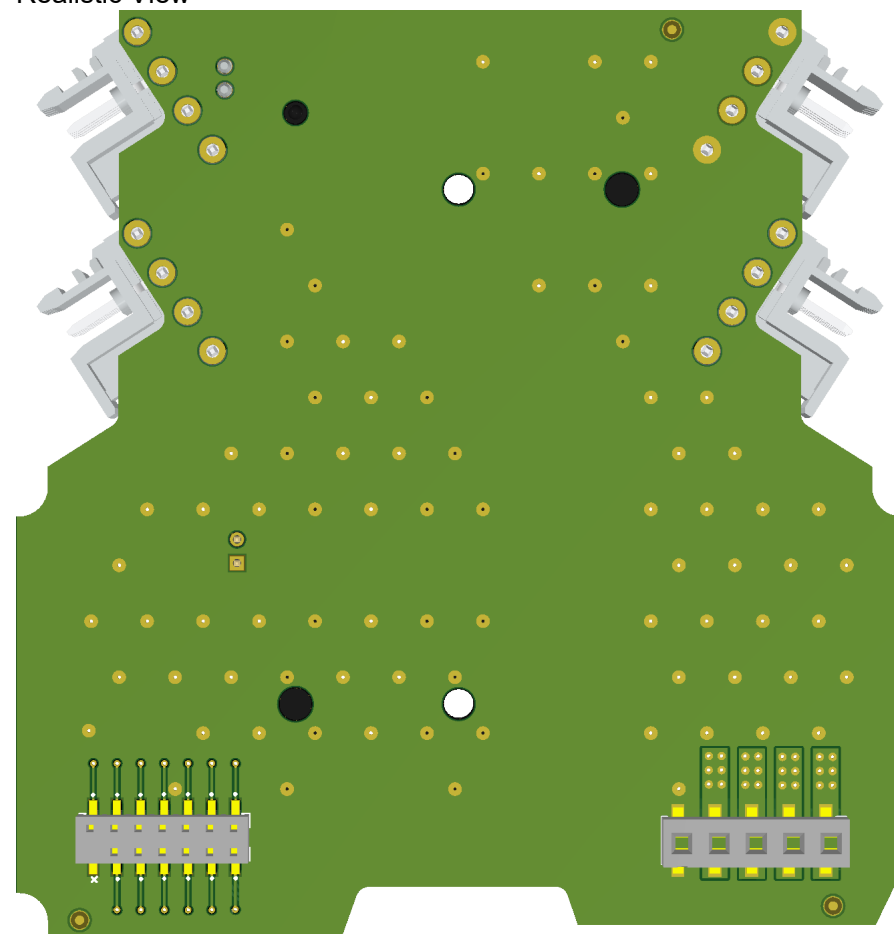
Drill Drawing View (Scale 1:1)

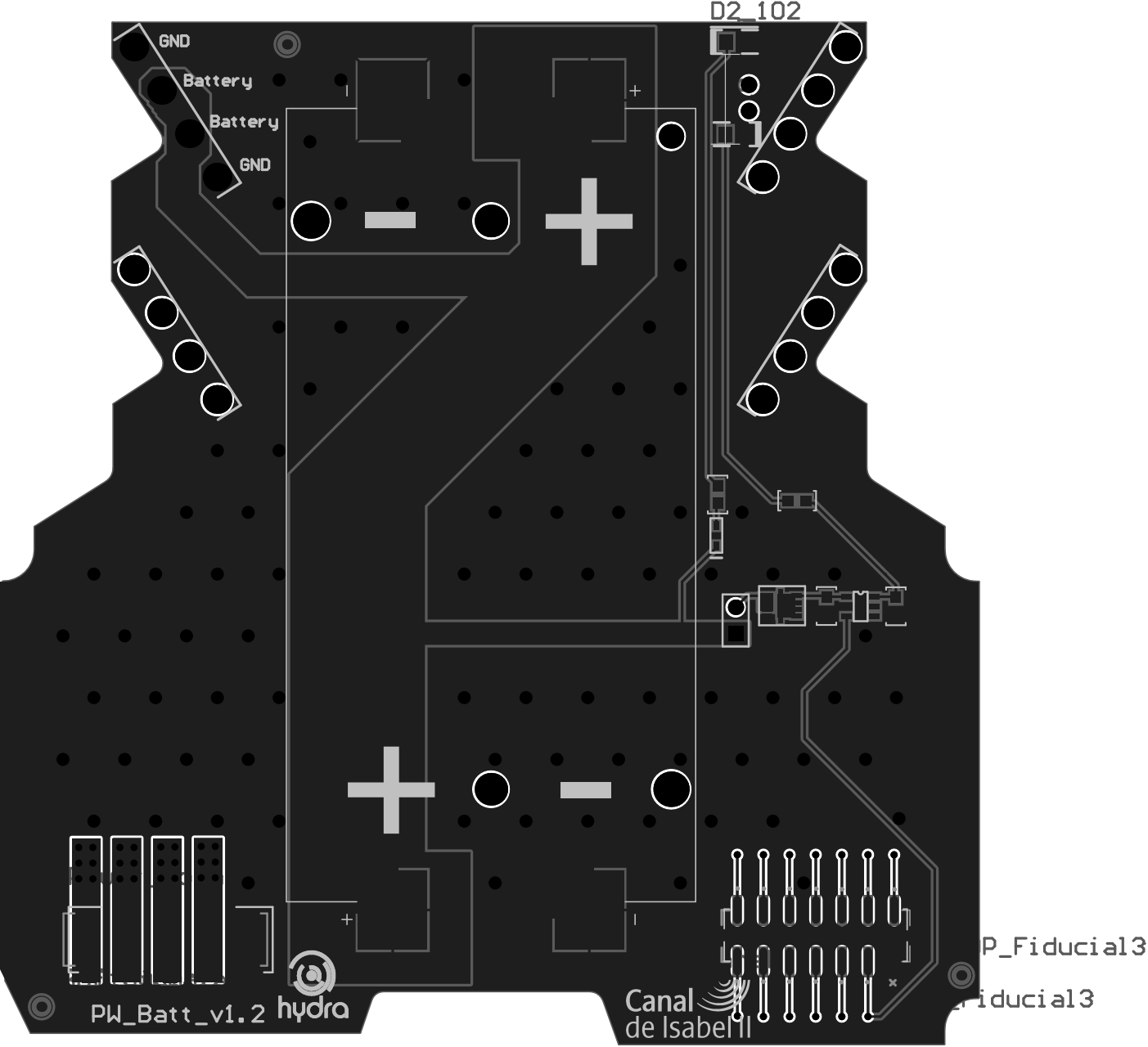


Realistic View



Realistic View





GND

Battery

Battery

GND

D2 102

PW\_Batt\_v1.2

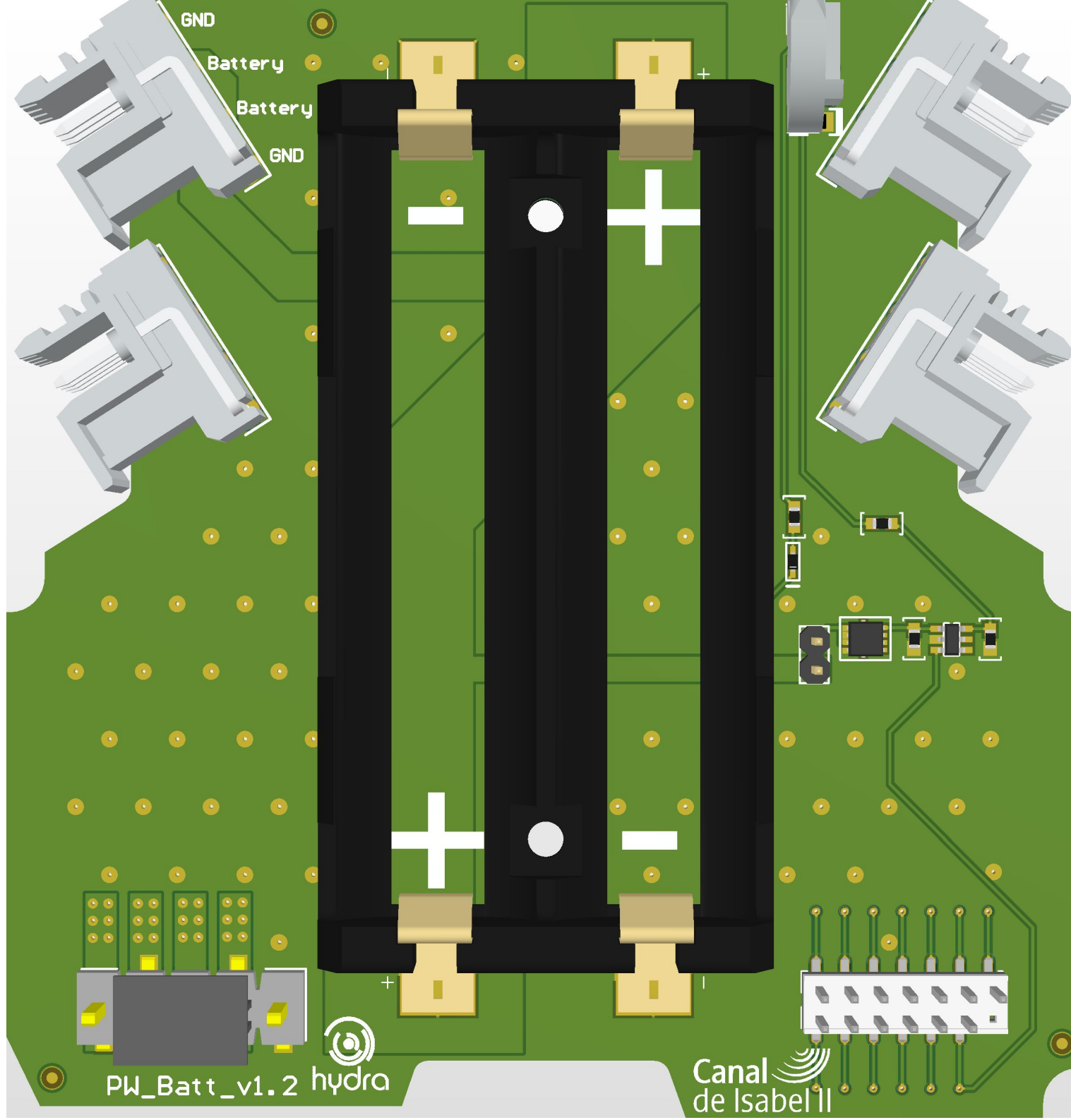
hydra

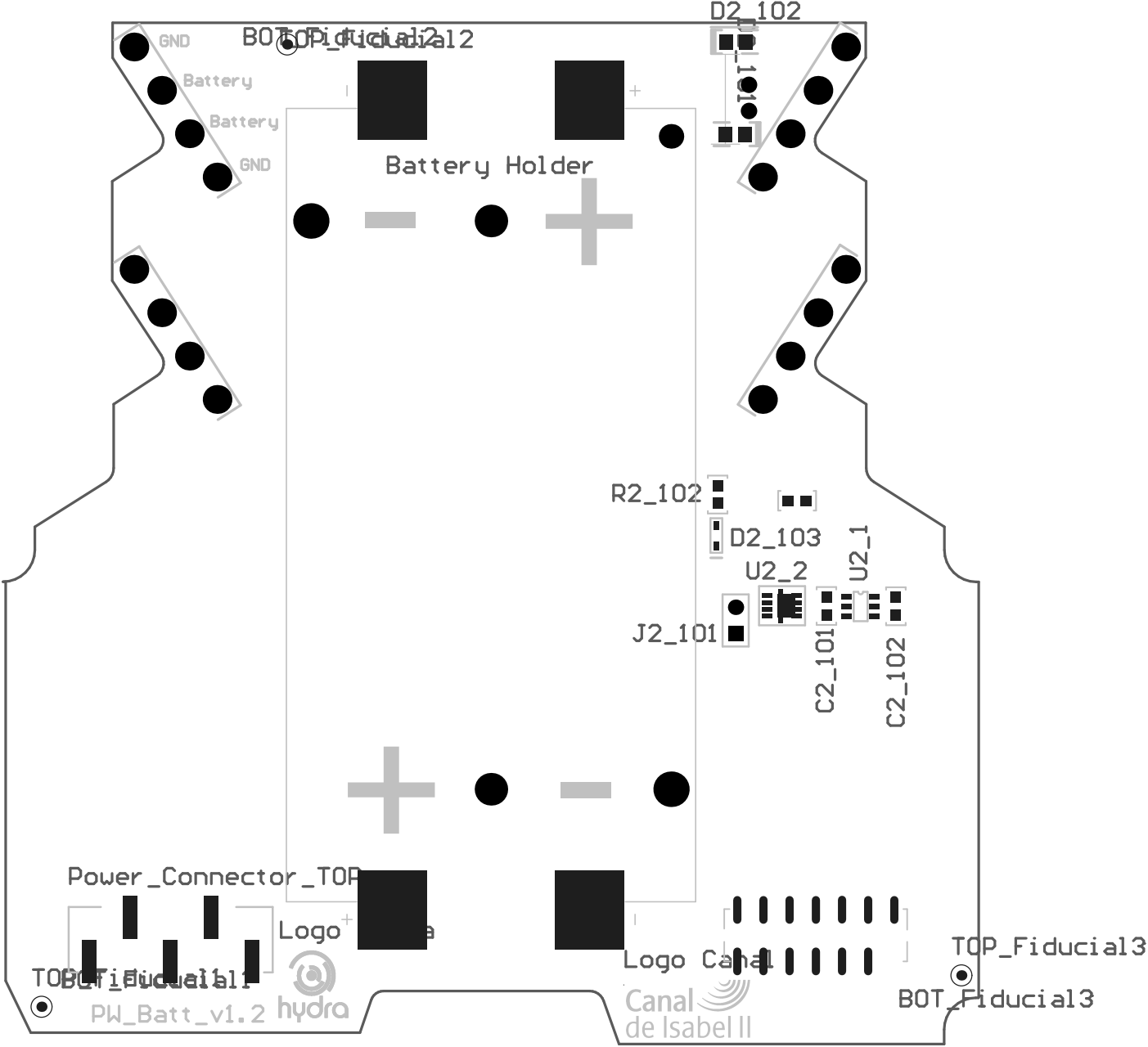
Canal  
de Isabel II

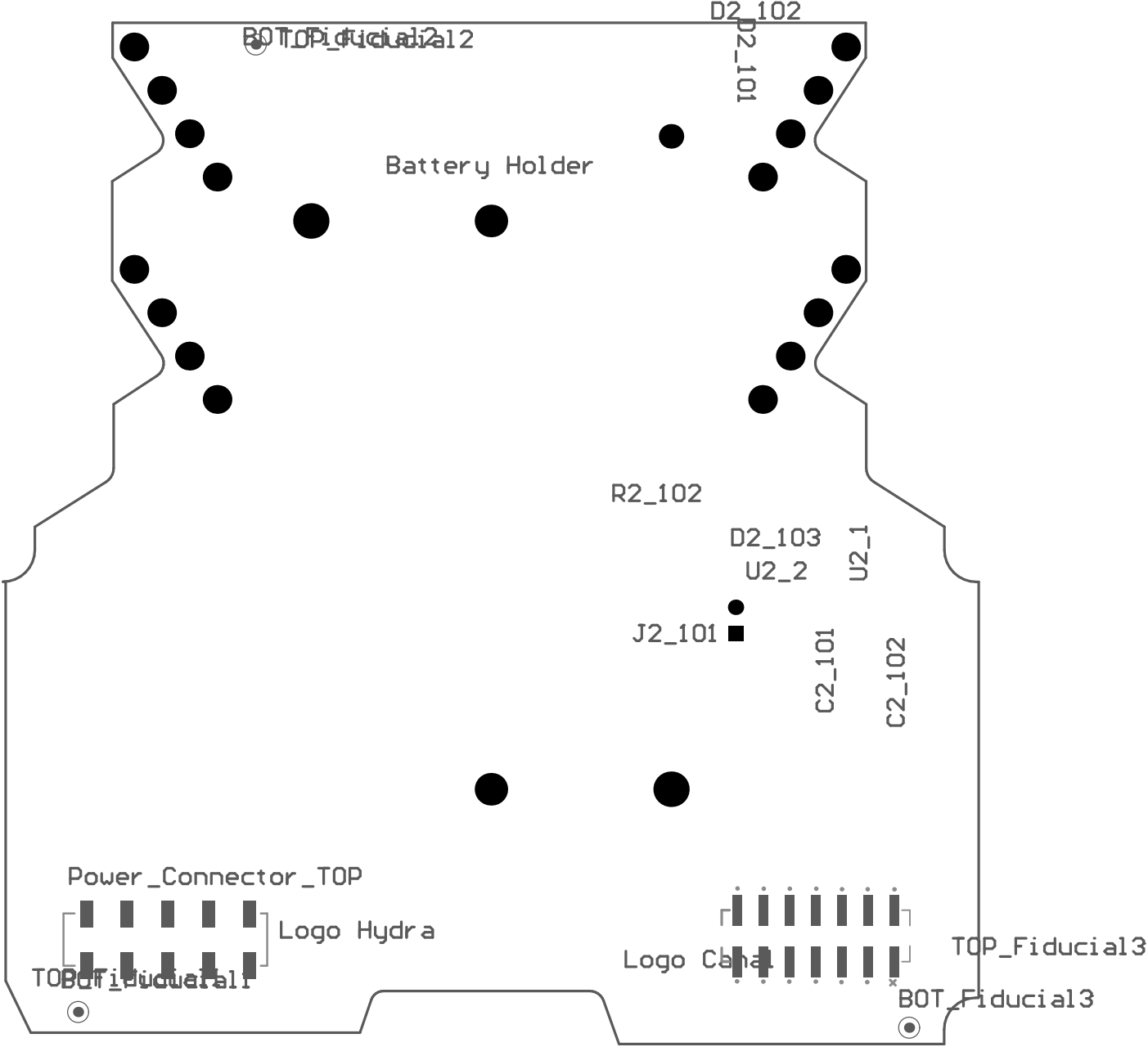
P\_Fiducial3

Fiducial3

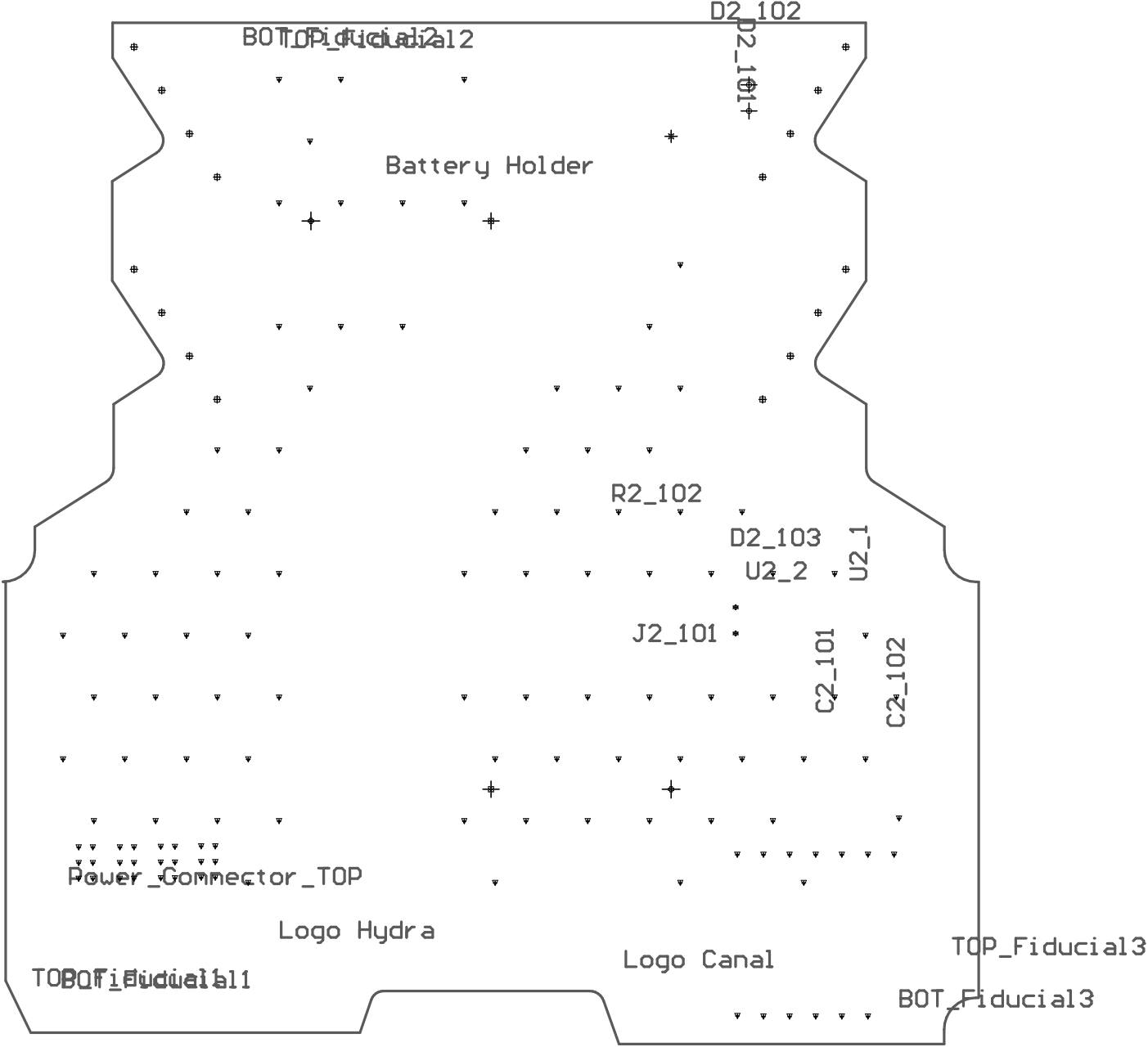
x











Designator	Description	Comment	Footprint	Quantity
Bateria LiFePoo4_1, Bateria LiFePoo4_2	Fullwat LiFePoo4 Battery LFP18650-15 1500mAh	LFP18650-15		2
Battery Holder	Cylindrical Battery Contacts, Clips, Holders & Springs 18650 DUAL SM BATTERY HOLDER. Ref: 1048 Keystone	Battery Holder 2x18650	Battery holder 2cell x 18650	1
BOT_Fiducial1, BOT_Fiducial2, BOT_Fiducial3	Fiducial point	Fiducial	FIDUCIAL BOTTOM	3
C2_101	CAP, CERM, 1 $\mu$ F, 16 V, +/- 10%, X5R, 0603	Cap	0603	1
C2_102	CAP, CERM, 0.1 $\mu$ F, 25 V, +/- 10%, X7R, 0603	Cap	0603	1
Connector Right 2, Connector_Right1	Phoenix contact MSTBO 2,5/ 4-G1R KMGY - 2907787 4 pines Right Position	2907787	Phoenix contact connector Right 2907787	2
Connector_left1, Connector_left2	Phoenix contact MSTBO 2,5/ 4-G1L KMGY - 2907774 4 pin left Caqrcasa pasamuros	2907774	Phoenix contact connector Left 2907774	2
D2_101	Green Standard Led Vf 2V If 20mA 0805 LTST-C170KGKT	LED1	0805 DIODO	1
D2_102	Red Standard Led Vf 2V If 20mA 0805 LTST-C170KRKT	LED1	0805 DIODO	1
D2_103	1N4448WT Diode	1N4448WT	SOD-523F	1
J2_101	header 2x1 2.54mm pitch	Jumper 1x2	Con Header 2x1	1
Led_Tube1	Phoenix contact 2202315 tubo de LED HS LC-H-D3/ R2XC1-5,08	2202315	Phoenix contact tubo de led 2x1 2202315	1
Logo Canal	Fiducial point	Fiducial	Logo CYII Pequeño	1
Logo Hydra	Fiducial point	Fiducial	Logo Hydra Pequeño	1
Power_Connector_BOT	samtec FHP-05-02-T-S	Power Connector 5x1 SMD SAMTEC Male 3.96 pitch	SAMTEC FHP-05-02-T-S 5pines 3.96 pitch housing	1
Power_Connector_TOP	SAMTEC HFWJ-05-02-T-S-VS-P	Power Connector 5x1 SMD SAMTEC Male 3.96 pitch	SAMTEC HFWJ-05-02-T-S-VS-P 5pines 3.96 pitch male	1
R2_101, R2_102	Res 220 Ohm 1% 1/10W 0603	Res1	0603	2
Signal_Connector_BOT	SAMTEC SSW-107-22-G-D-VS-013-P	Signal Connector 7x2 SMD SAMTEC Male ciego 13	SAMTEC 14 pines 13 blind housing SSW-107-22-G-D-VS-013	1
Signal_Connector_TOP	SAMTEC HW-07-09-T-D-250-SM-013	Signal Connector 7x2 SMD SAMTEC housing ciego 13	SAMTEC 14 pines 13 blind male HW-07-09-T-D-435-SM-013	1
TOP_Fiducial1, TOP_Fiducial2, TOP_Fiducial3	Fiducial point	Fiducial	FIDUCIAL TOP	3
U2_1	TPS22917 Load Switch External Qod and SlewRate control	TPS22917	SOT23-6	1
U2_2	SIS410DN-T1-GE3 MOSFET 20V Vds 20V Vgs PowerPAK 1212-8	SIS410DN-T1-GE3	PowerPAK 1212-8	1