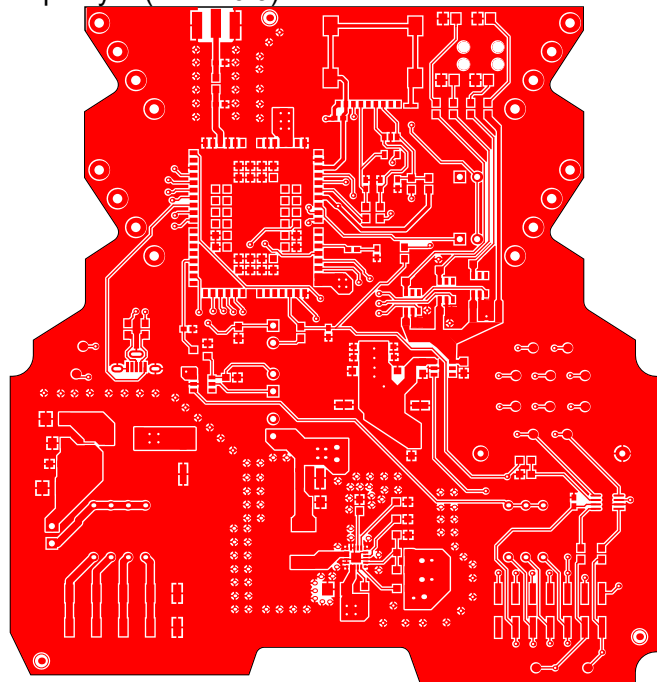
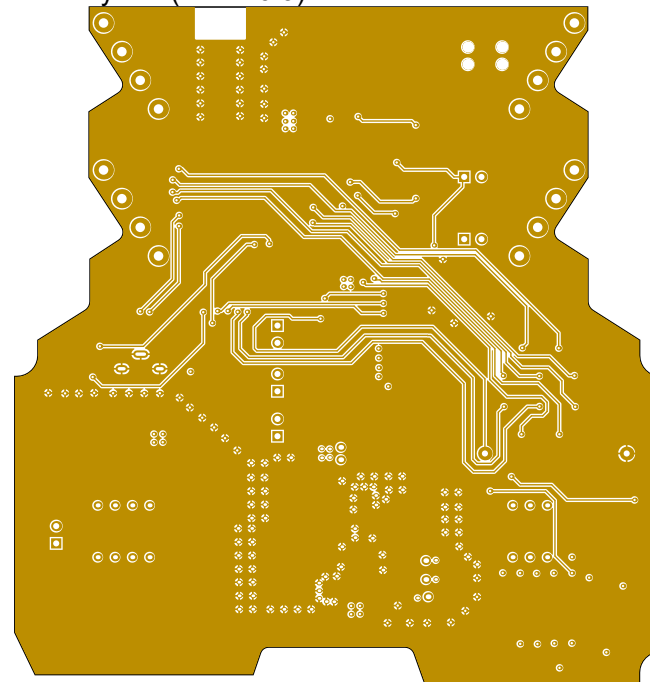


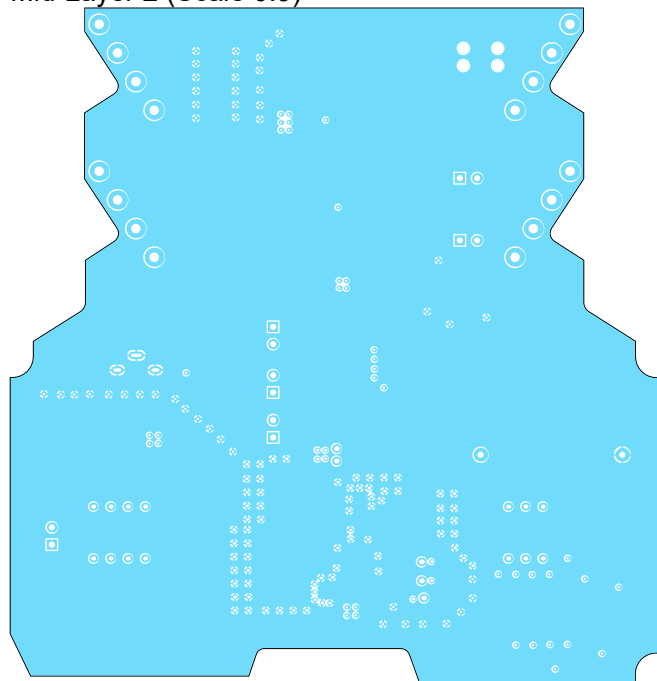
Top Layer (Scale 0.9)



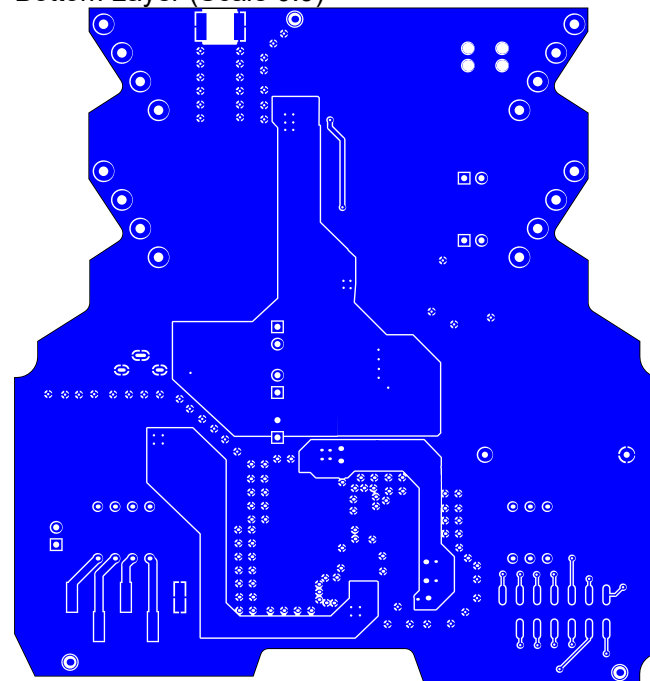
Mid-Layer 1 (Scale 0.9)



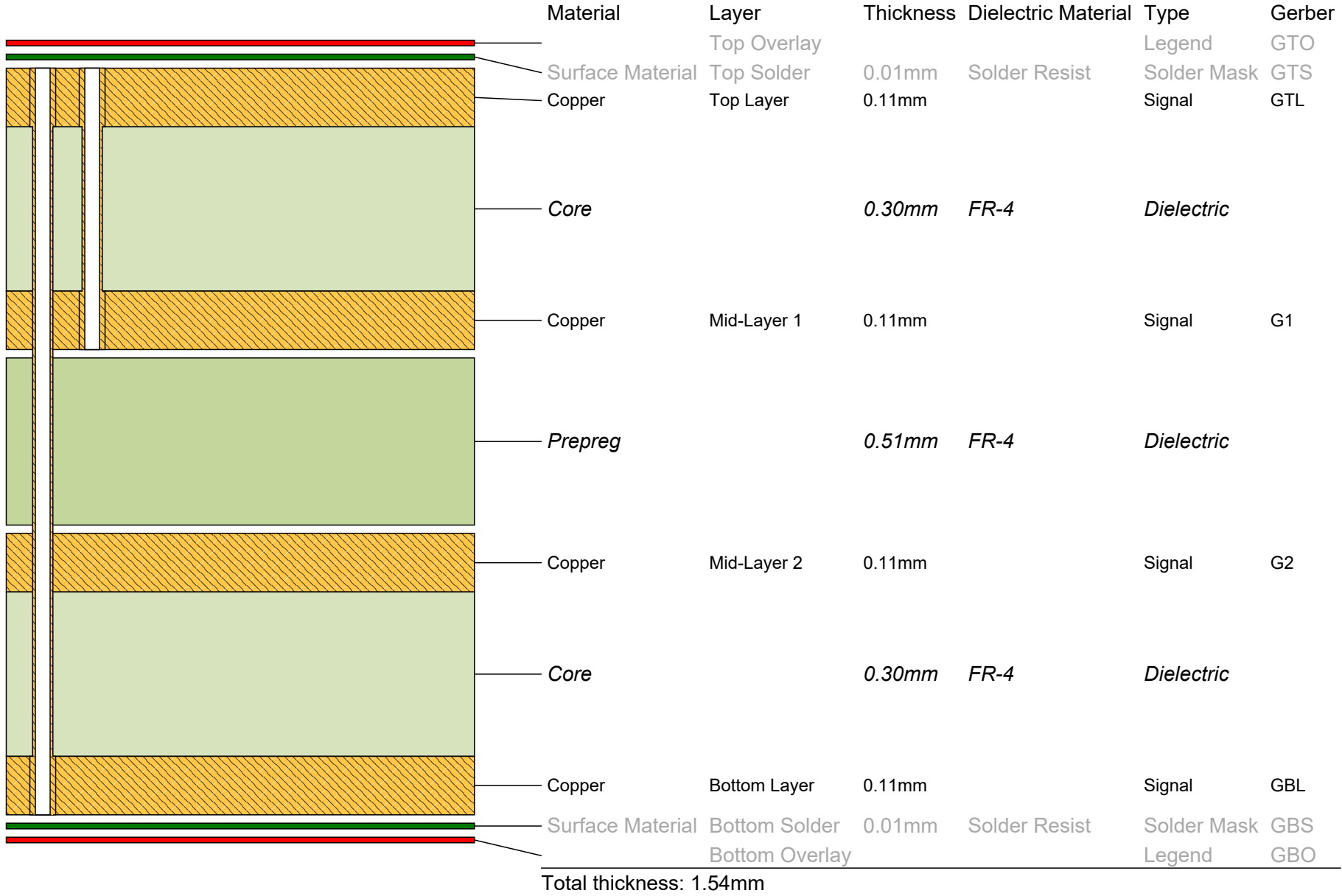
Mid-Layer 2 (Scale 0.9)



Bottom Layer (Scale 0.9)

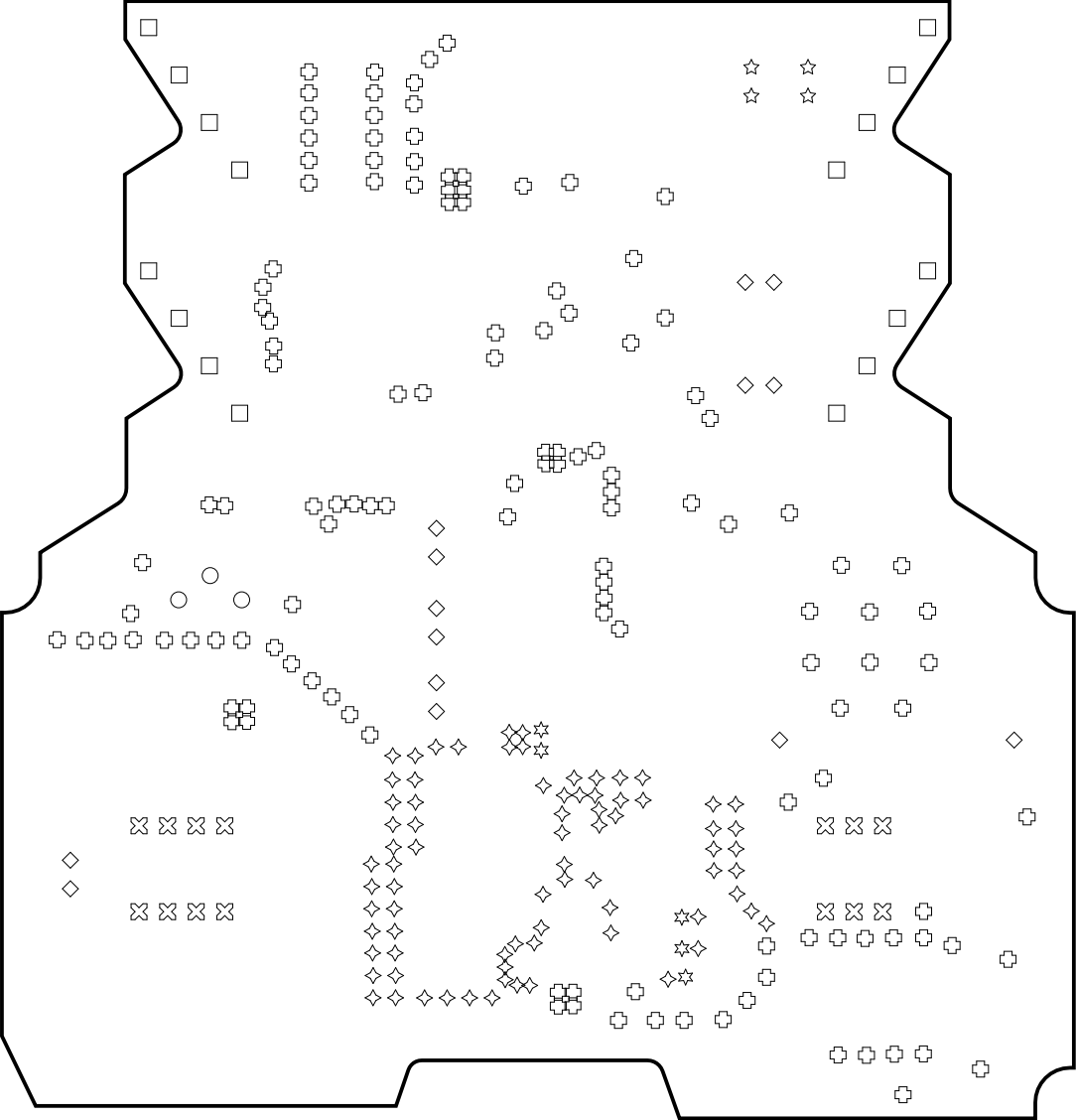


Layer Stack Legend

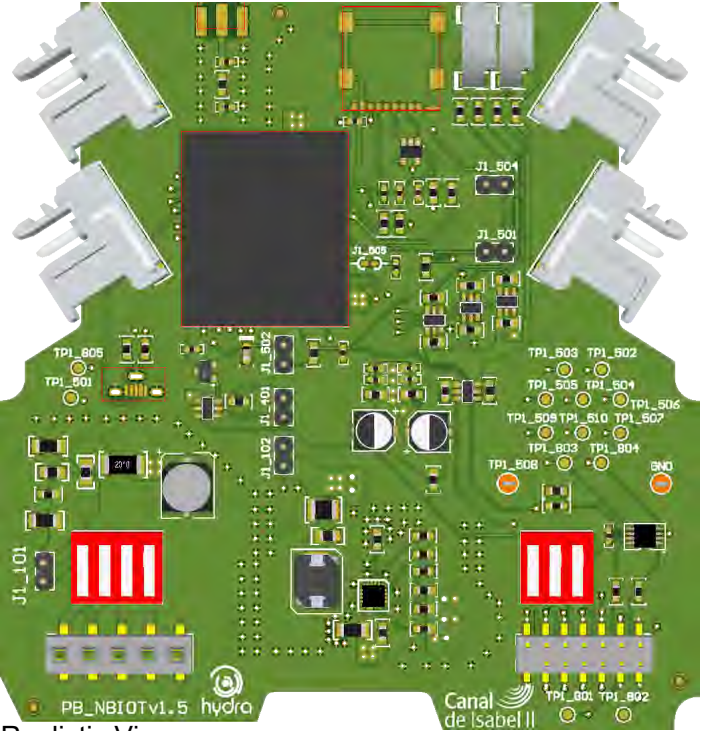


Drill Table				
Symbol	Count	Hole Size	Plated	Hole Tolerance
⊕	133	0.35mm	Plated	
◇	77	0.40mm	Plated	
○	3	0.50mm	Plated	
⊗	14	0.60mm	Plated	
☆	5	0.71mm	Plated	
◇	14	0.90mm	Plated	
□	16	1.40mm	Plated	
☆	4	1.55mm	Plated	
266 Total				

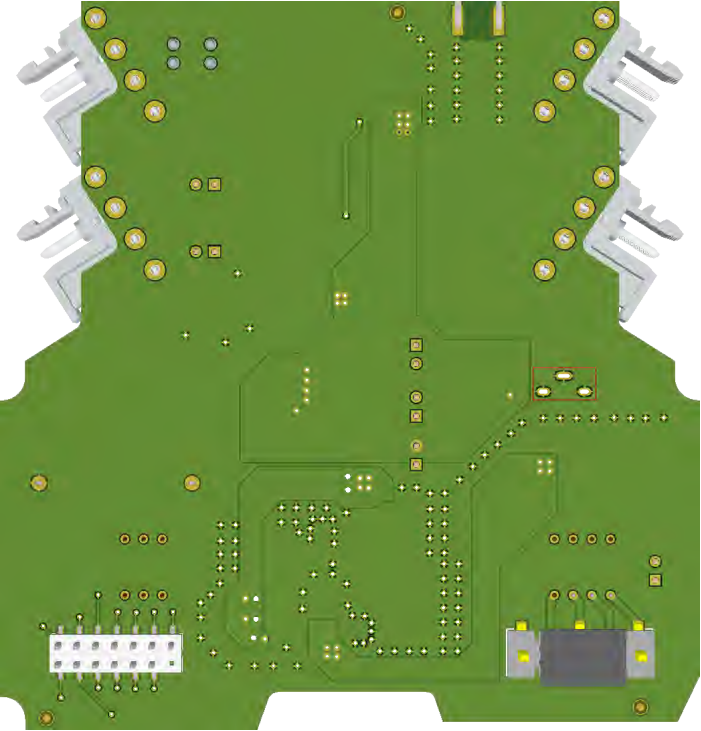
Drill Drawing View (Scale 1.5)

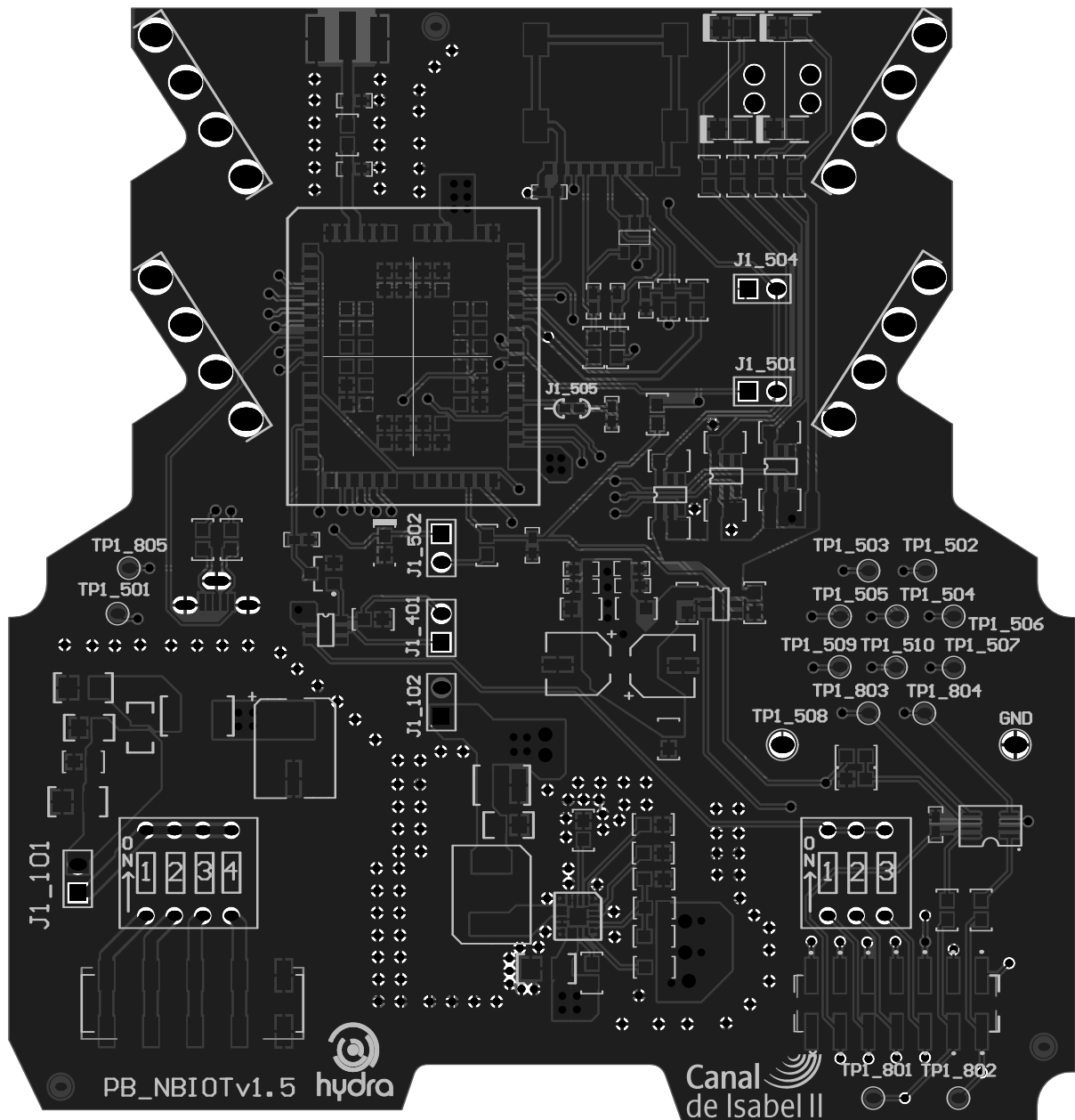


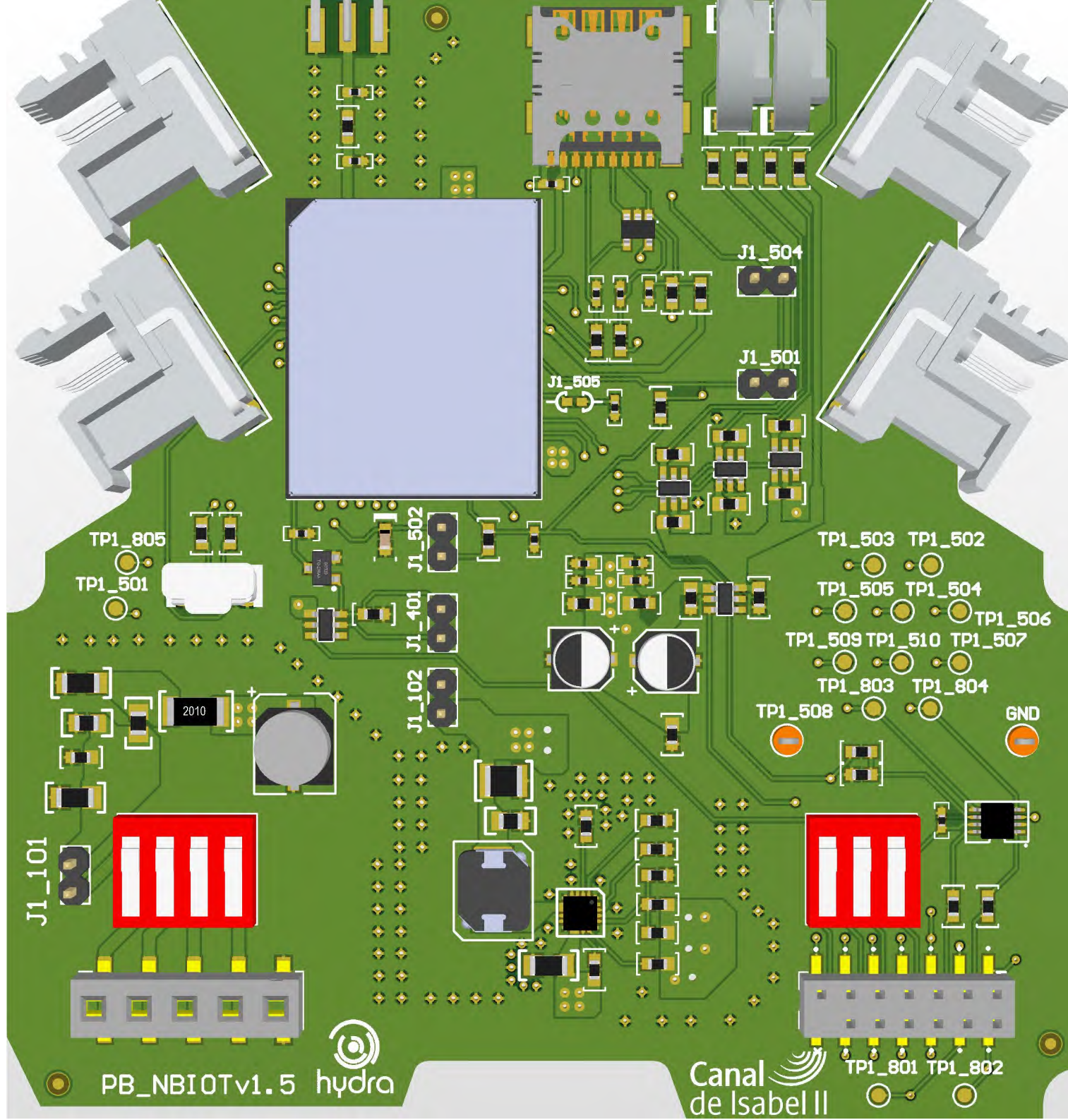
Realistic View

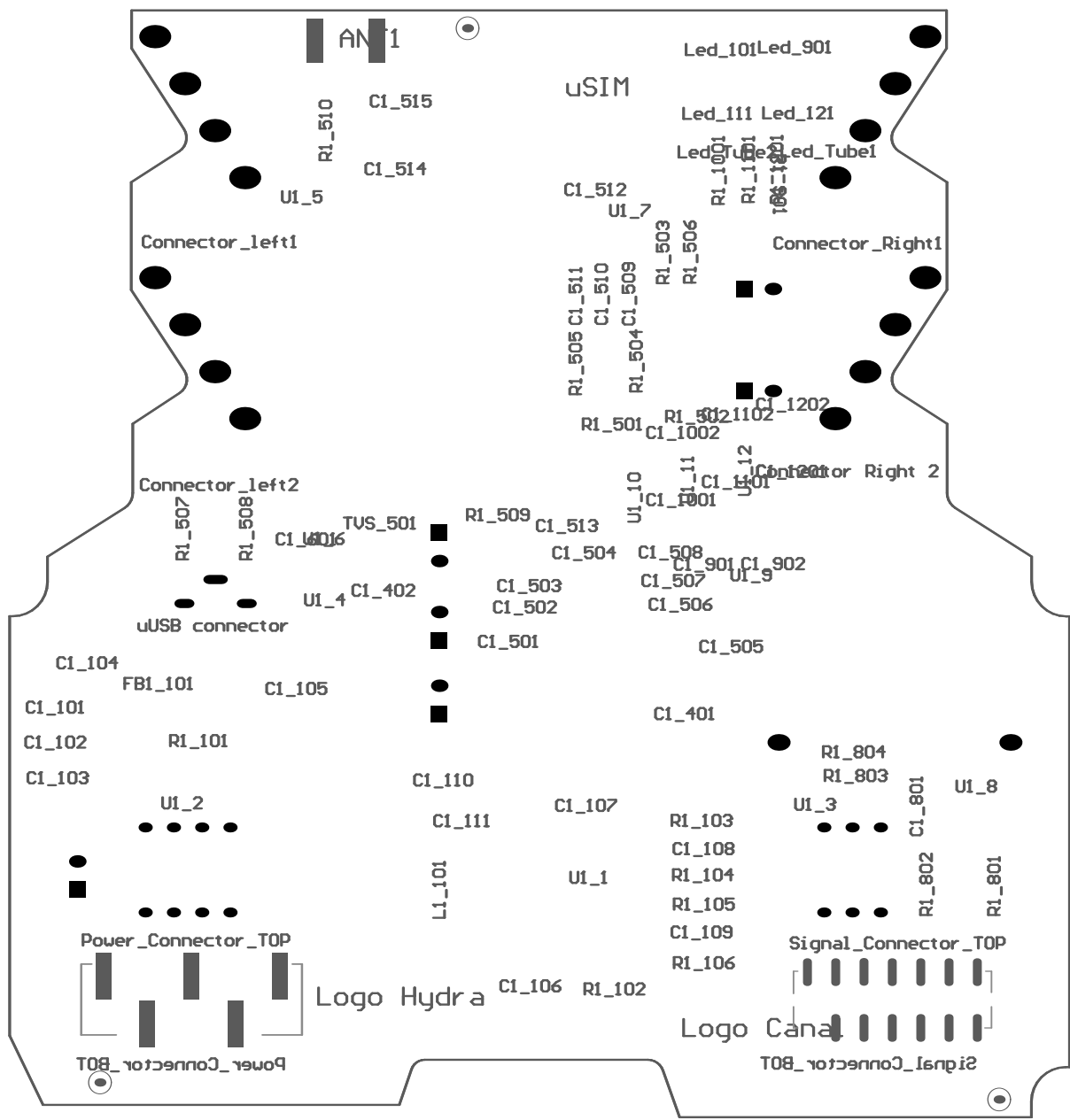


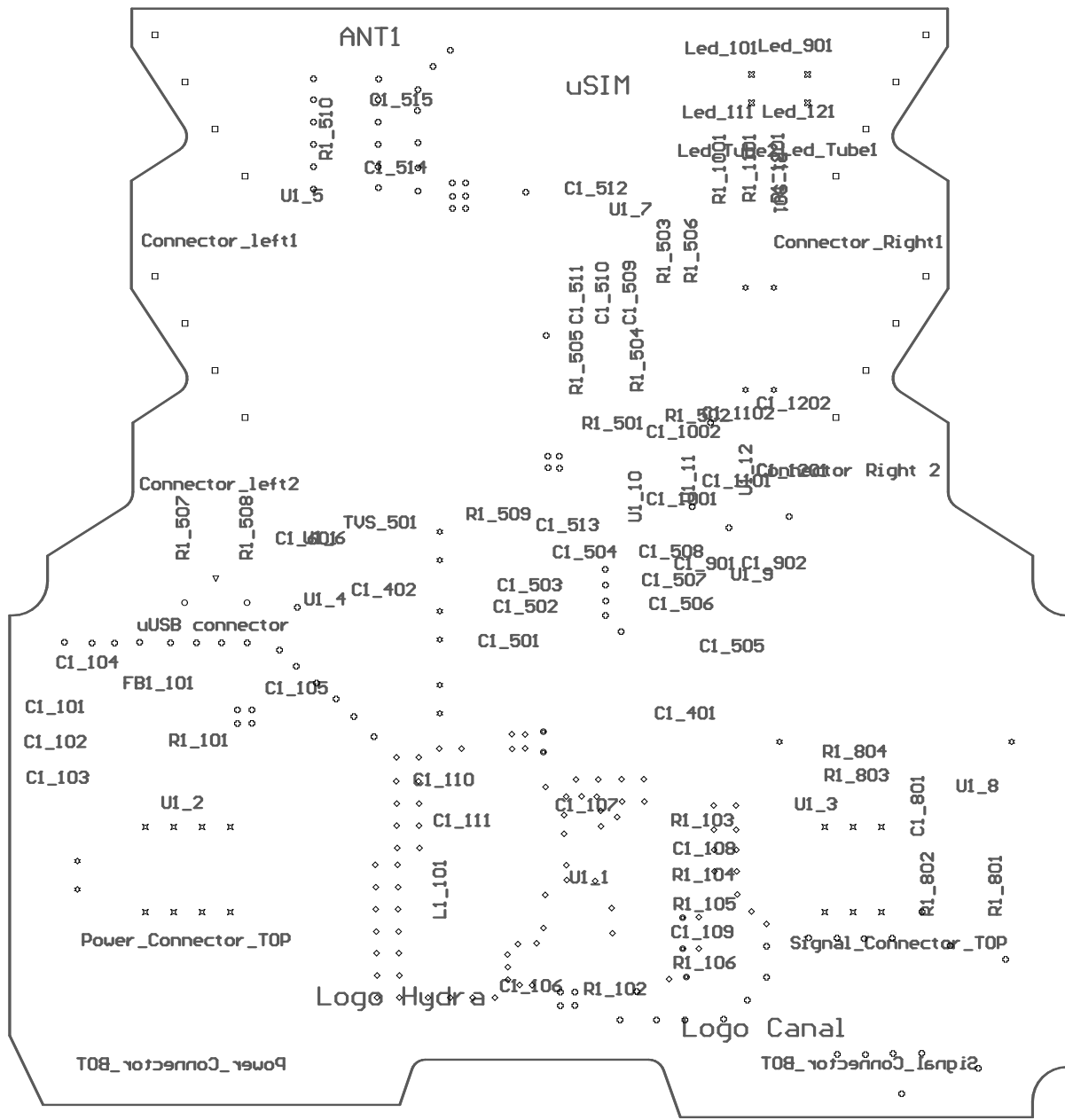
Realistic View

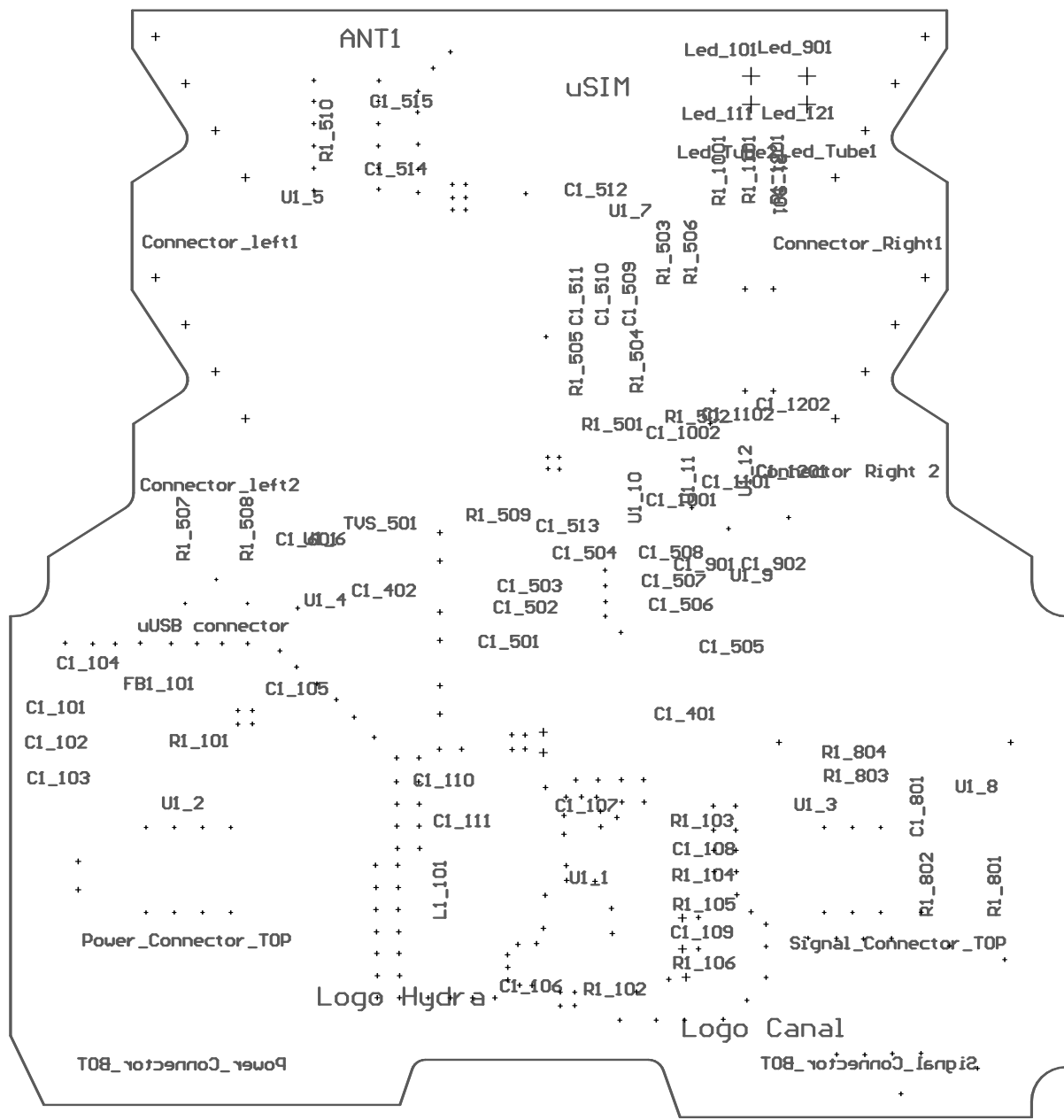












Designator	Comment	Description	Footprint	Quantity
ANT1	Amphenol RF 132322	Amphenol RF 132322 Conector de RF / Coaxial, SMA Coaxial, Jac Borde de Placa (End Launch), 50 ohm	Antena Edge Connector	1
BOT_Fiducial1, BOT_Fiducial2, BOT_Fiducial3	Fiducial	Non-mountable component	FIDUCIAL BOTTOM	3
C1_101	50V 0805	CAP, X7R, 1µF, 50V, 10%, 0805, MURATA, GRM21BR71H105KA12	0805	1
C1_102	50V 0603	CAP, X7R, 0.1µF, 50V, 10%, 0603, MURATA, GRM188R71H104KA9	0603	1
C1_103, C1_104, C1_106	50V 1206	CAP, X7R, 4.7µF, 50V, 10% 1206, MURATA, GRM31CR71H475KA12	1206	3
C1_105	63V	CAP, ALUM 22µF 63V, SUN ELECT. 63CE22B5	CAP SMD 6.3(X7.7)	1
C1_107	Cap	CAP, X7R, 1µF, 25V, 10%, 0603, MURATA, GRM188R71E105KA12	0603	1
C1_108	Cap	CAP, X7R, 0.01µF, 16V, 10%, 0603, AVX, 0603YC103KAT2A	0603	1
C1_109	Cap	CAP, COG, 10pF, 25V, 5%, 0603, AVX, 06033A100JAT2A	0603	1
C1_110	10V 1210	CAP, X7R, 4µF, 10V, 10%, 1210, MURATA, GRM32ER71A476KE1	1210	1
C1_111	16V 0805	CAP, X7R, 4.7µF, 16V, 10%, 0805,	0805	1
C1_401, C1_901, C1_902, C1_1002, C1_1101, C1_1102, C1_1201, C1_1202	Cap	CAP, CERM, 1 µF, 16 V, +/- 10%, X5R, 0603	0603	9
C1_402	Cap	CAP, CERM, 0.1 µF, 25 V, +/- 10%, X7R, 0603	0603	1
C1_501	Cap Pol1	EMZJ6R3ADA101ME61G Capacitadores electrolíticos de aluminio 100uF 20% Tol.	CAP SMD 5Dx5.9	1
C1_502, C1_506	Cap	Condensadores de cerámica multicapa (MLCC- SMD/SMT) 6.3V 100uF 20% Tol.	0603 0603 1% Tol	2
C1_503, C1_507, C1_509, C1_511	Cap	Condensadores de cerámica multicapa (MLCC- SMD/SMT) 6.3V 100uF 20% Tol.	0402	5
C1_504, C1_508, C1_512, C1_801	Cap	Condensadores de cerámica multicapa (MLCC- SMD/SMT) 6.3V 100uF 20% Tol.	0402 0402 20% Tol	5
C1_505	Cap Pol1	EMZJ6R3ADA101ME61G Capacitadores electrolíticos de aluminio 100uF 20% Tol.	CAP SMD 5Dx5.9	1
C1_514, C1_515	Cap	Not Mounted	0402	2
C1_601	Cap	Condensadores de cerámica multicapa (MLCC- SMD/SMT) 10nF	0402 0402	1
Connector Right 2, Connector Right 2	2907787	Phoenix contact MSTBO 2,5/ 4-G1R KMGY - 2907787 4 pines Right	Phoenix contact connector Right 2907787	2
Connector_left1, Connector_left1	2907774	Phoenix contact MSTBO 2,5/ 4-G1L KMGY - 2907774 4 pin left C	Phoenix contact connector Right 2907774	2
FB1_101	EMC Ferrite	TDK, MPZ2012S331AT000, 0805, ferrite bead	0805	1
GND	TP	Testpoint	Testpoint Insercion	1
J1_101, J1_102, J1_401, J1_502, J1_504	Jumper 1x2	2.54mm Jumper 60900213421	Con Header 2x1	6
J1_505	Jumper 1x2	2.54mm Jumper 60900213421	JUMPER SMD 0402	1
L1_101	SPM6530T-2R2M-HZ	SPM6530T-2R2M-HZ, 2.2uH 20% shielded	SPM6530T-2R2M-HZ	1
Led_101	Yellow	Yellow Standard Led Vf 2V If 20mA 0805 LTST-C171KSKT	0805 DIODO	1
Led_111	Red	Red Standard Led Vf 2V If 20mA 0805 LTST-C170KRKT	0805 DIODO	1
Led_121	Orange	Orange Standard Led Vf 2V If 20mA 0805 LTST-C170KFKT	0805 DIODO	1
Led_901	Green	Green Standard Led Vf 2V If 20mA 0805 LTST-C170KGKT	0805 DIODO	1
Led_Tube1, Led_Tube2	2202315	Phoenix contact 2202315 tubo de LED HS LC-H-D3/ R2XC1-5,08	Phoenix contact tubo de 2202315	2
Logo Canal	PCB printed logo	Non-mountable component	Logo CVII Pequeño	1
Logo Hydra	PCB printed logo	Non-mountable component	Logo Hydra Pequeño	1
Power_Connector_BOT	Power Connector 5x1 SAMTEC Male 3.96 pitch	SAMTEC HFWJ-05-02-T-S-VS-P	SAMTEC HFWJ-05-02-T	1
Power_Connector_TOP	Powe Connector 5X1 SAMTEC Housing 3.96 pitch	samtec FHP-05-02-T-S	SAMTEC FHP-05-02-T-S 3.96 pitch housing	1
R1_101		RES, CHIP, 0 ohm, 3/4W, 2010, VISHAY, CRCW20100000Z0EF	2010	1
R1_102	Res1	RES, CHIP, 1M, 1/10W, 1%, 0603, VISHAY, CRCW06031M00FKEA	0603	1
R1_103		RES, CHIP, 18.2k, 1/10W, 1%, 0603, VISHAY, CRCW060318K2FKEA	0603	1
R1_104	Res1	RES, CHIP, 220k, 1/10W, 1%, 0603,	0603	1
R1_105	Res1	RES, CHIP, 910k, 1/10W, 1%, 0603,	0603	1
R1_106	Res1	RES, CHIP, 49.9k, 1/10W, 1%, 0603, VISHAY, CRCW060349K9FKEA	0603	1
R1_501	Res1	Res 100 ohm 0402 1/16W 1%	0402	1
R1_502	Res1	Res1 51K 0603 1/10W 0.1%	0603	1
R1_503, R1_504, R1_505, R1_508, R1_510, R1_801, R1_804	Res2	Res 0 Ohm 5% 1/10W 0603	0603	8
R1_506	Res2	Res 15k 0603 1/5W 5%	0603	1
R1_509	Res2	Res 10K .1% 1/10W 0603	0603	1
R1_803	Res2	Res 100kohm 1% 1/10W 0603	0603	1
R1_804	Res2	Res 10kOhm 0.1% 1/10W 0603	0603	1
R1_901, R1_1001, R1_1101, R1_1201	Res201	Res 330 Ohm 1% 1/10W 0603	0603	4
Signal_Connector_BOT	Signal Connector 7x2 S1 SAMTEC Male clego 13	SAMTEC HW-07-09-T-D-250-SM-013	SAMTEC 14 pines 13 blin HW-07-09-T-D-435-SM-013	1
Signal_Connector_TOP	Signal Connector 7x2 S1 SAMTEC housing clego	SAMTEC SSW-107-22-G-D-VS-013-P	SAMTEC 14 pines 13 blin housing SSW-107-22-G-D-013	1
TOP_Fiducial1, TOP_Fiducial2, TOP_Fiducial3	Fiducial	Non-mountable component	FIDUCIAL TOP	3
TP1_501, TP1_502, TP1_503, TP1_504, TP1_505, TP1_506, TP1_507, TP1_509, TP1_510, TP1_801, TP1_802, TP1_803, TP1_804	TP	Only printed - Non-mountable component	Testpoint SMD	13
TP1_508	TP	Only printed - Non-mountable component	Testpoint Insercion	1
TP1_804	TP	Testpoint	Testpoint SMD	1
TVS_501	TVS diode	Littlefuse AXGD10603NR Supresores de ESD / diodos TVS 0603 02000 QJAL	0603 Diodo	1
U1_1	LT8609SIV#PBF	Step-Down regulator 5V 2A	LT8609S	1
U1_2	4 lines DIP Switch	GrayHill 78B04T Conmutadores DIP / Conmutadores SIP DIP Switch Pos	4 lines DIP SWITCH	1
U1_3	3 lines DIP Switch	GrayHill 78B03T Conmutadores DIP / Conmutadores SIP DIP Switch Pos	3 lines DIP SWITCH	1
U1_4	TPS22917DBVR	TPS22917DBVR	SOT23-6	1
U1_5	QUECTEL BG95M3		BG96	1
U1_6	MMUN2233LT1G	On semiconductors MMUN2233LT1G,SOT23-3, Transistores bipol 100mA 50V BRT NPN	SOT23-3	1
U1_7	ESDS314DBVR	Texas Instruments ESDS314DBVR Supresores de ESD / diodos TV ESD Protection Diode Array 5-SOT-23 -40 to 125	SOT23-5	1
U1_8	TXS0102DCTR	Texas Instruments TXS0102DCTR Traslación - Niveles de voltaje Translator SSOP-B	SSOP8	1
U1_9, U1_10, U1_11, U1_12	TPS22917	Load Switch External Qod and SlewRate control	SOT23-6	4
uSIM	uSIM	wurth electronics Micro SIM connector 693023010811	usim 693023010811 Wur elektron	1
uUSB connector	Vertical uUSB	Molex 105133-0031 Conectores USB MicroUSB B Rec Vrt W/Flange	usb B 105133-0031	1