

A

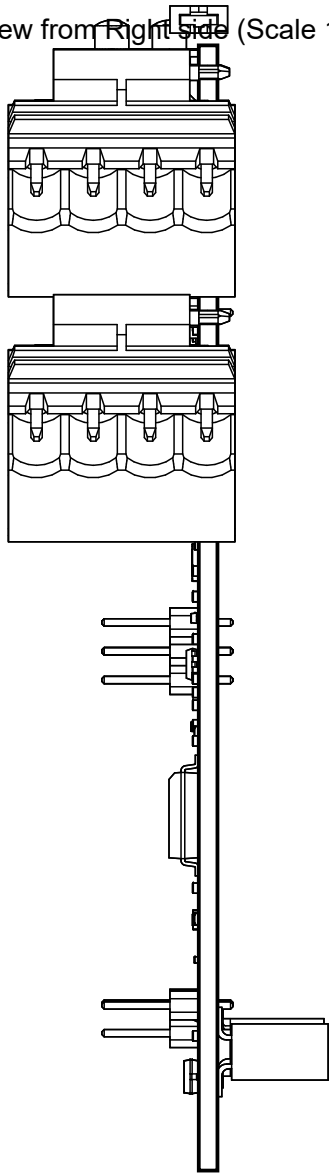
B

C

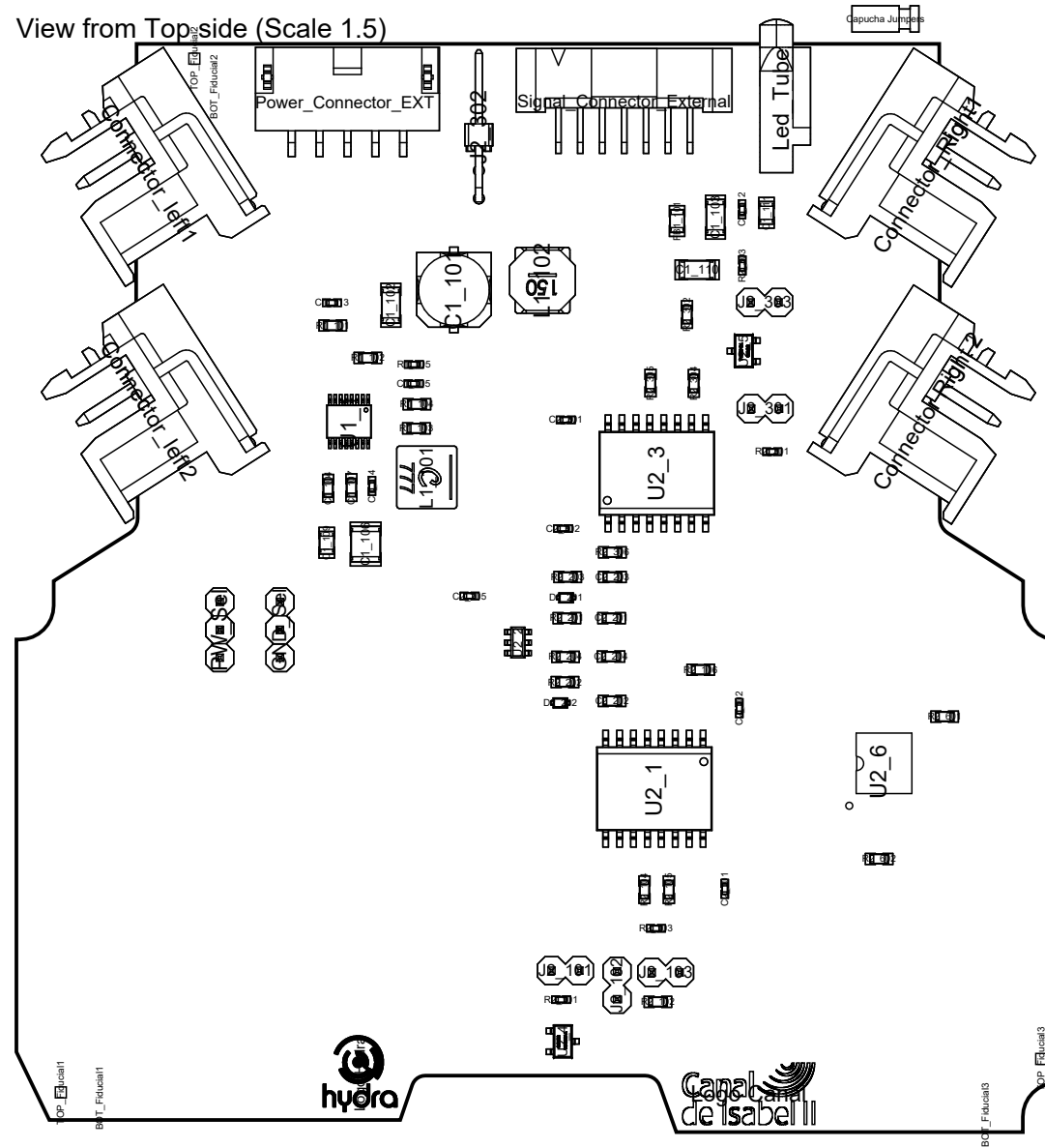
D

E

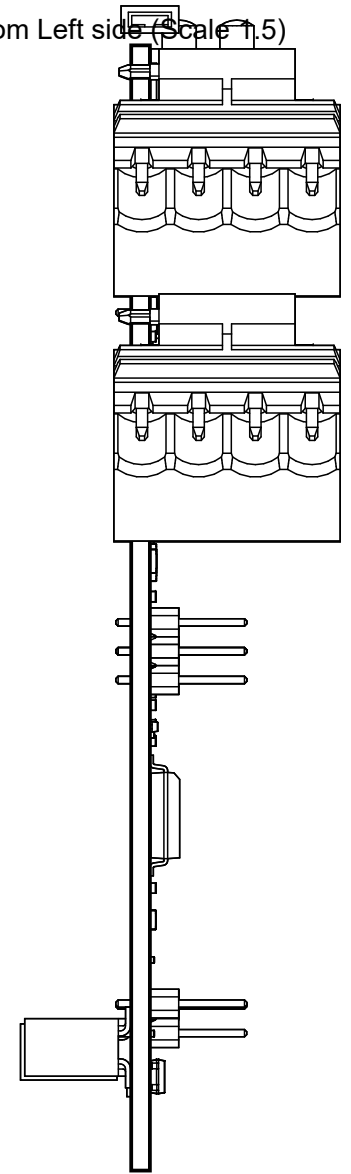
View from Right side (Scale 1.5)



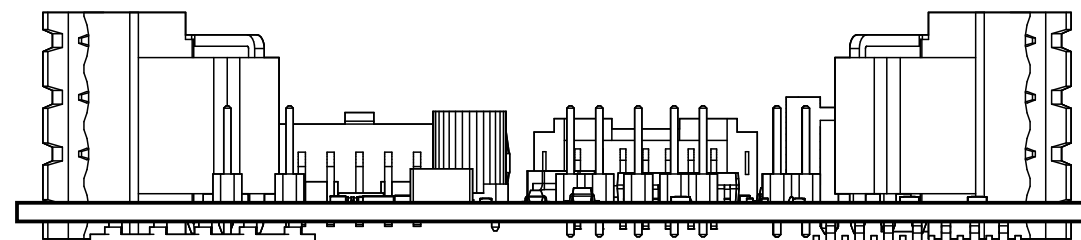
View from Top side (Scale 1.5)



View from Left side (Scale 1.5)



View from Front side (Scale 1.5)



A

B

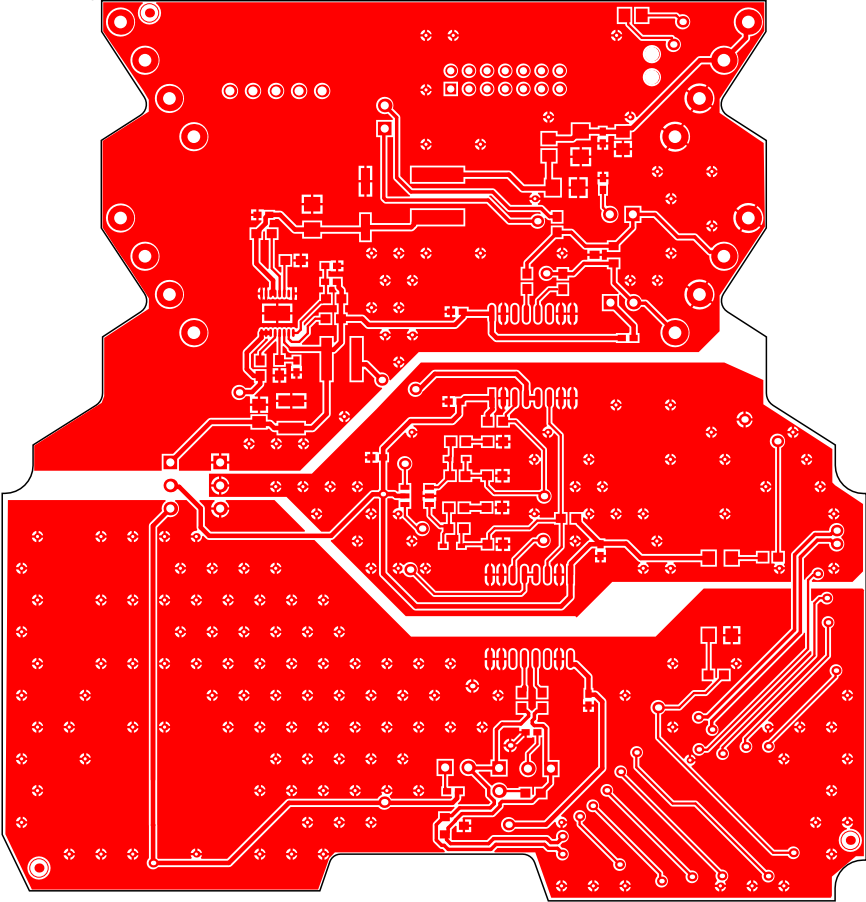
C

E

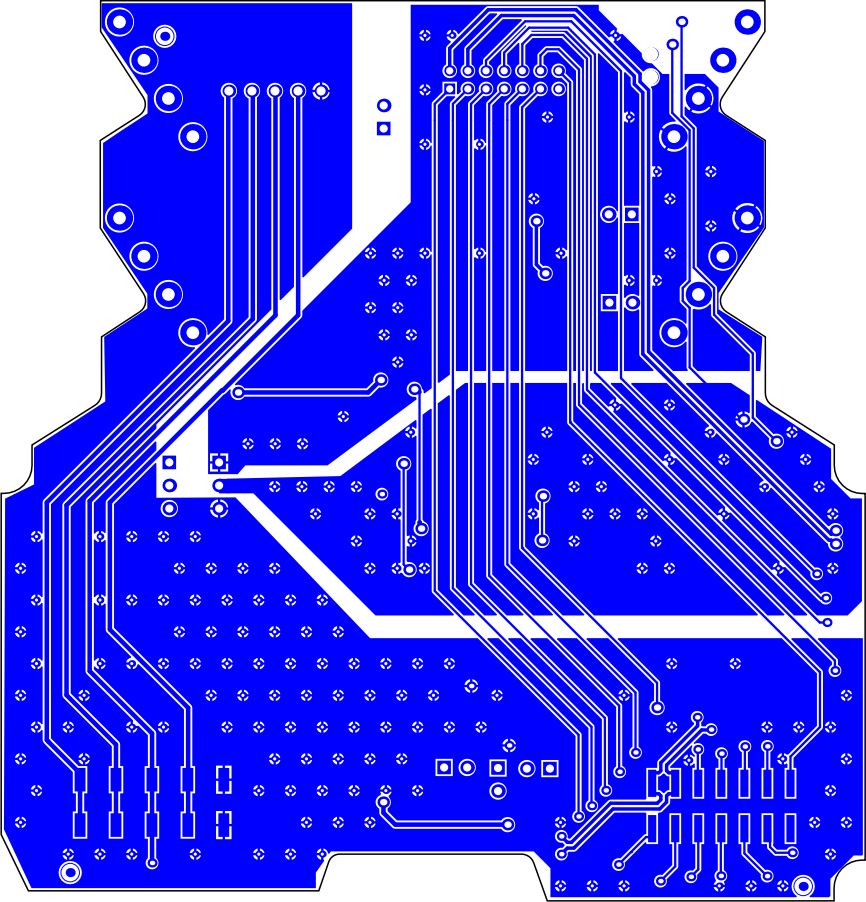
Layer Stack Legend

Material	Layer	Thickness	Dielectric Material	Type	Gerber
	Top Overlay			Legend	GTO
Surface Material	Top Solder	0.01mm	Solder Resist	Solder Mask	GTS
Copper	Top Layer	0.04mm		Signal	GTL
Core		1.57mm	FR-4	Dielectric	
Copper	Bottom Layer	0.04mm		Signal	GBL
Surface Material	Bottom Solder	0.01mm	Solder Resist	Solder Mask	GBS
	Bottom Overlay			Legend	GBO
Total thickness: 1.67mm					

Top Layer (Scale 1.2)



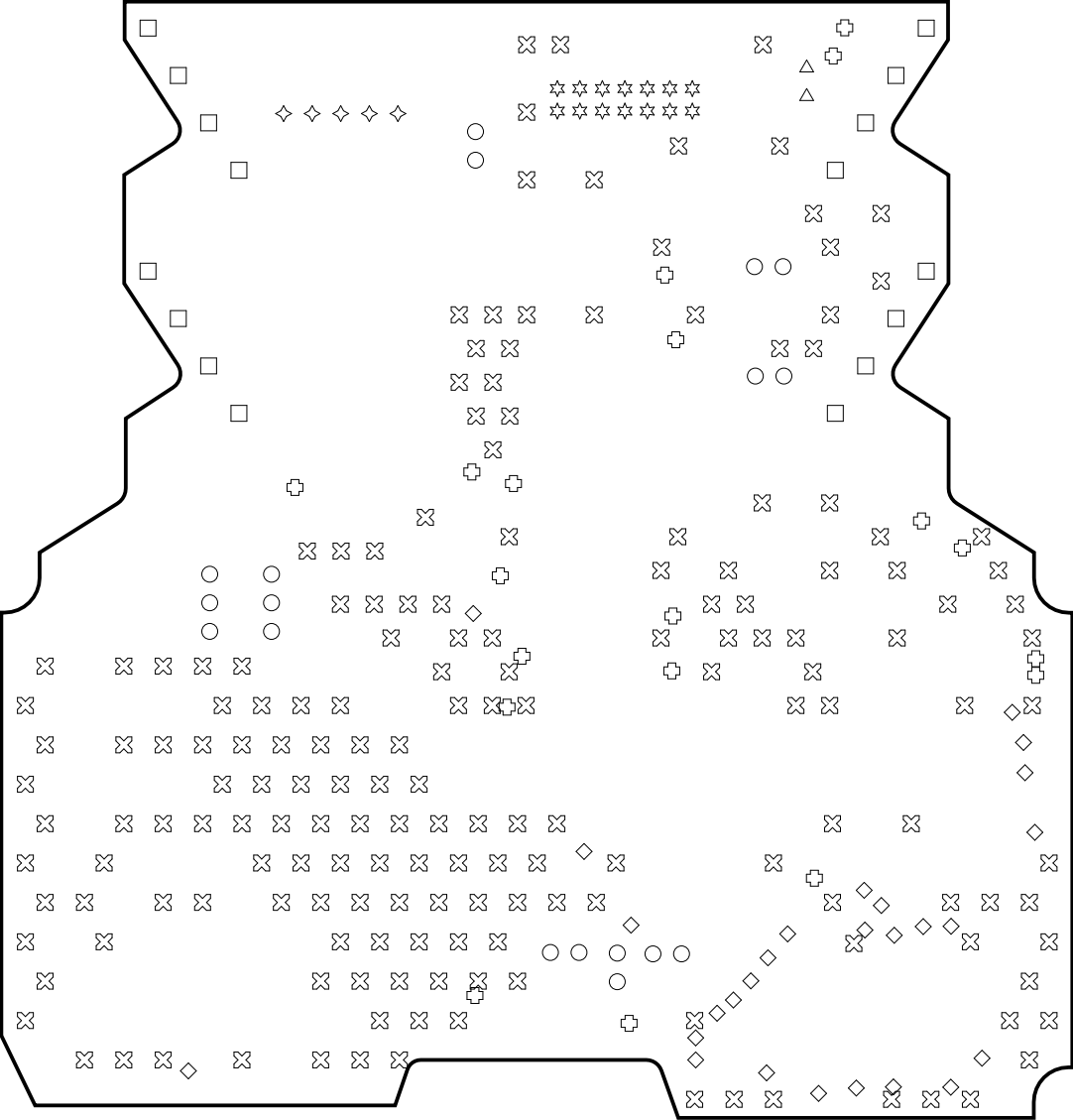
Bottom Layer (Scale 1.2)



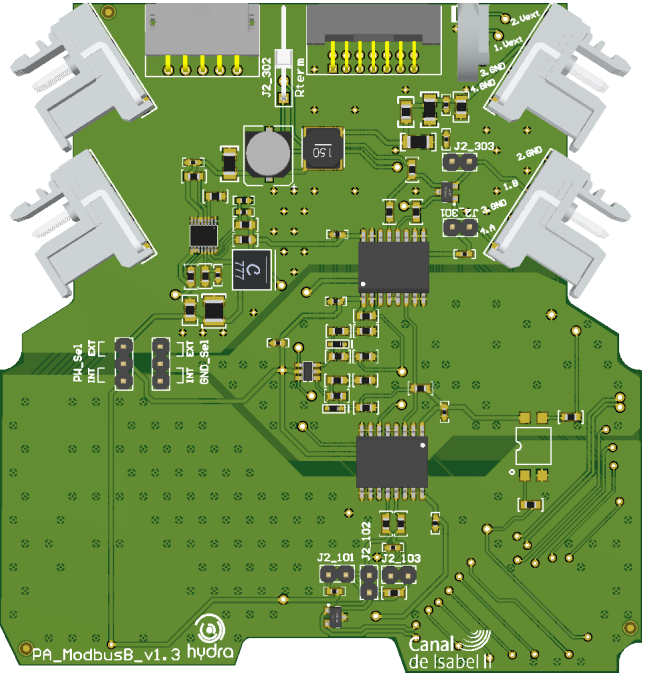
Drill Table

Symbol	Count	Hole Size	Plated	Hole Tolerance
⊗	181	0.35mm	Plated	
◇	27	0.50mm	Plated	
⊕	19	0.71mm	Plated	
☆	14	0.80mm	Plated	
○	18	0.90mm	Plated	
◊	5	1.00mm	Plated	
□	16	1.40mm	Plated	
△	2	1.60mm	Non-Plated	
	282 Total			

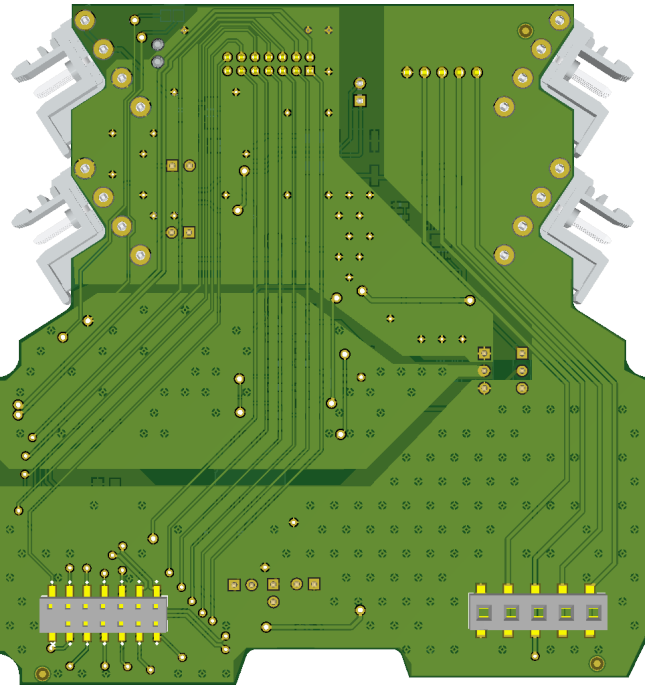
Drill Drawing View (Scale 1.5)

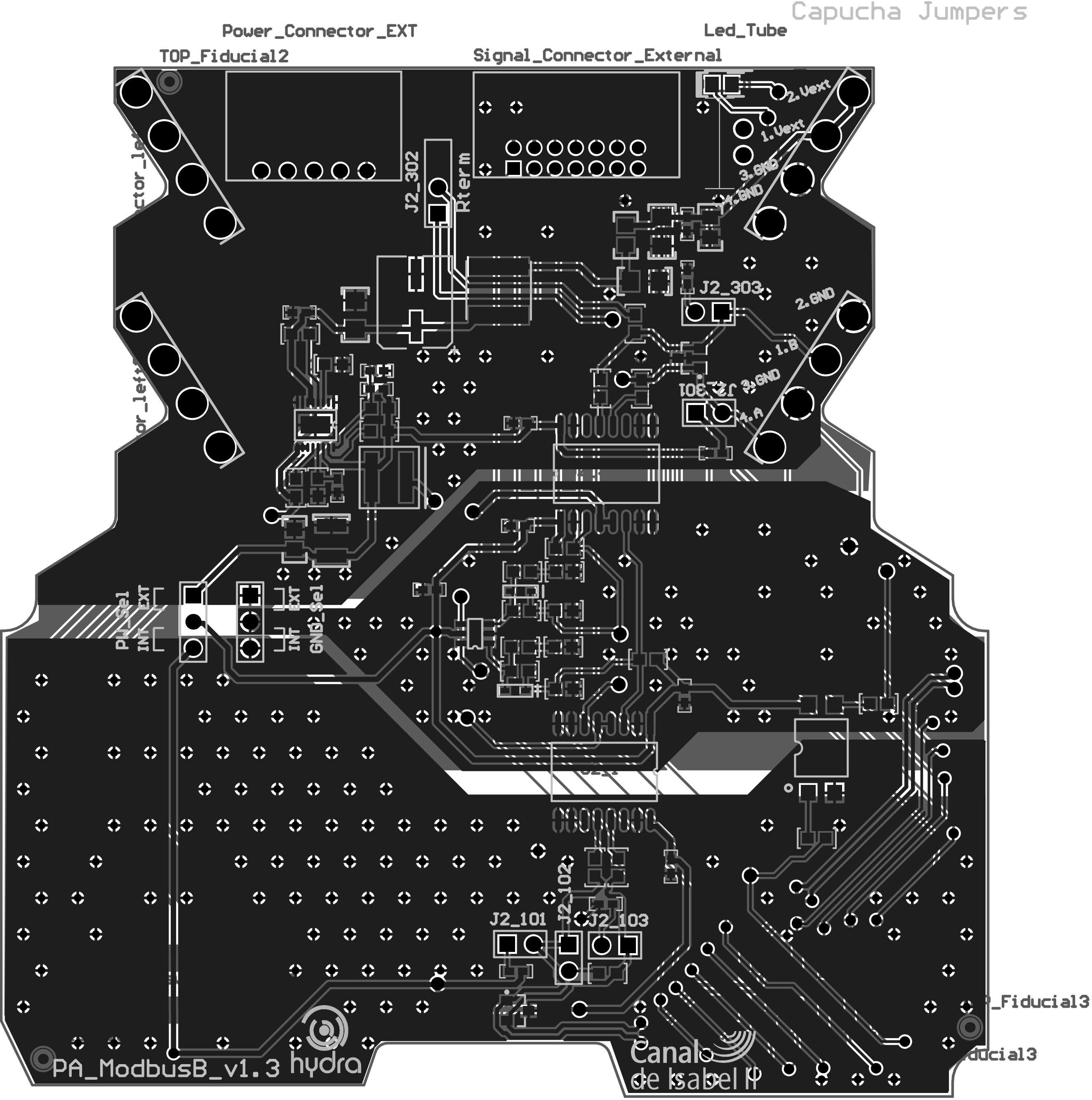


Realistic View



Realistic View





Power_Connector_EXT

Lcd_Tube

Capucha Jumper s

TOP_Fiducial2

Signal_Connector_External

ector_left

or_left

PU_sel

INT_EXT

INT_EXT

GND_sel

J2_302

Rterm

J2_303

108.3

J2_301

4.A

3.GND

1.B

2.GND

2.Uext

1.Uext

3.GND

4.GND

J2_101

J2_102

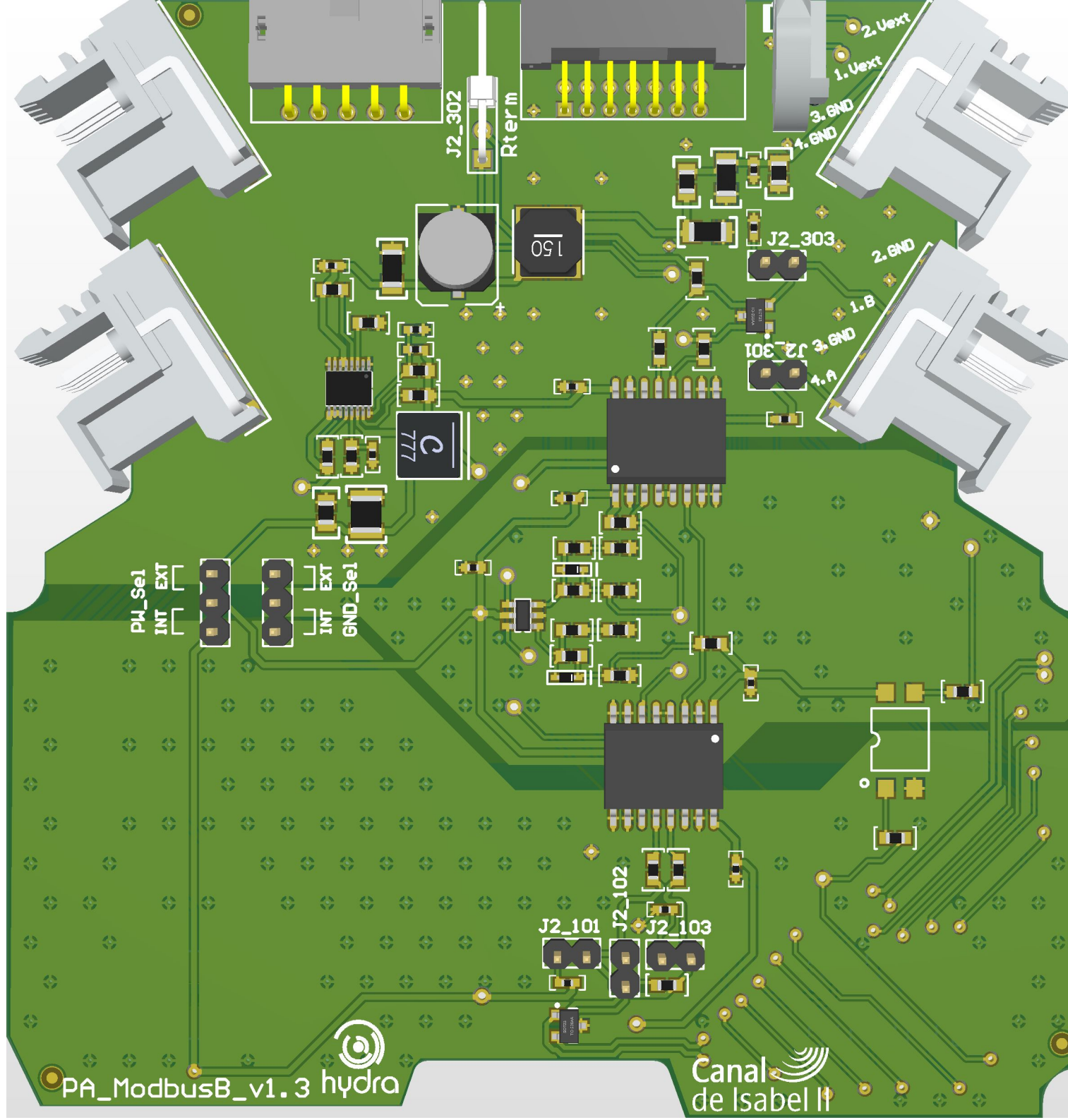
J2_103

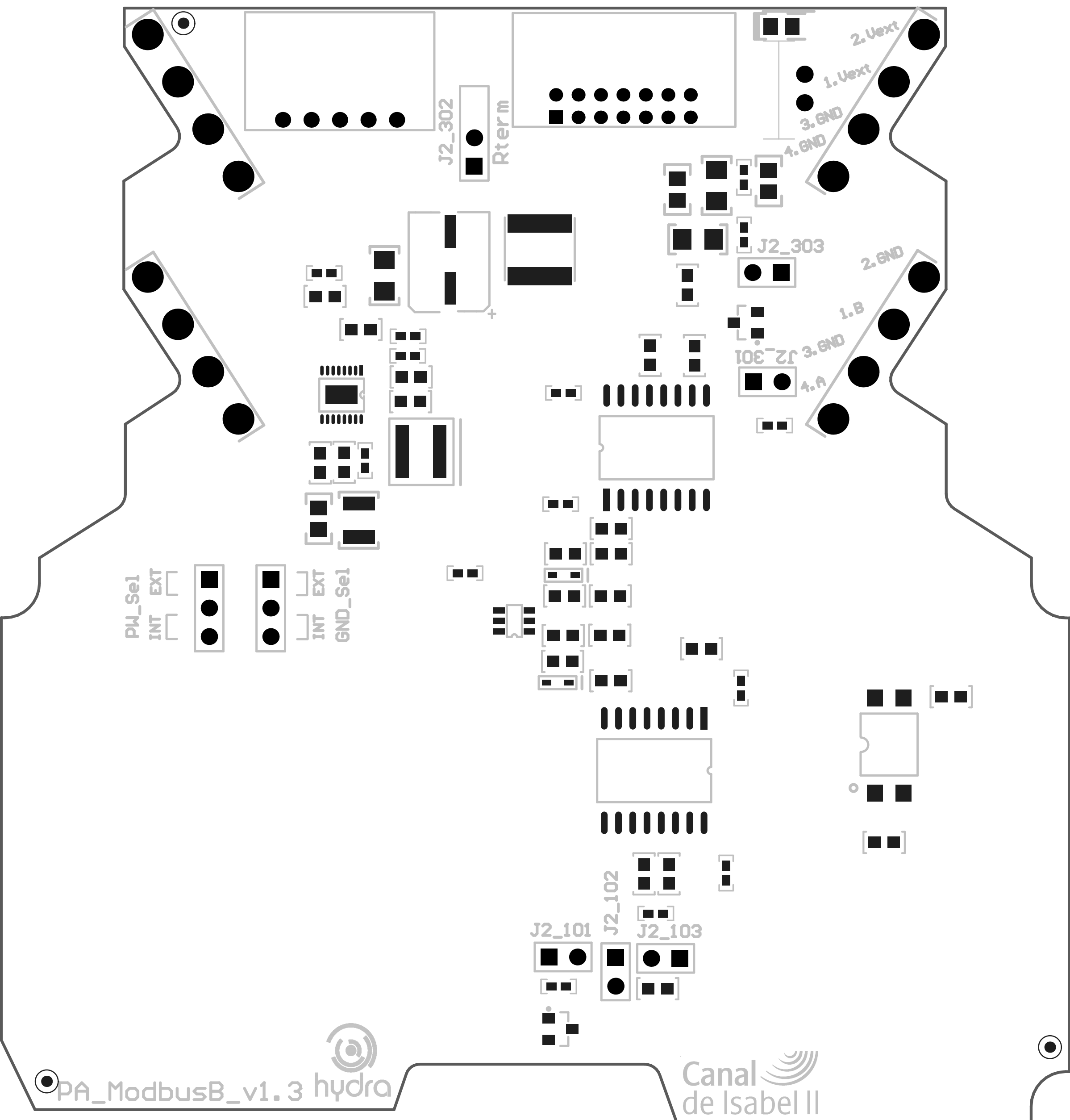
PA_ModbusB_v1.3 hydra

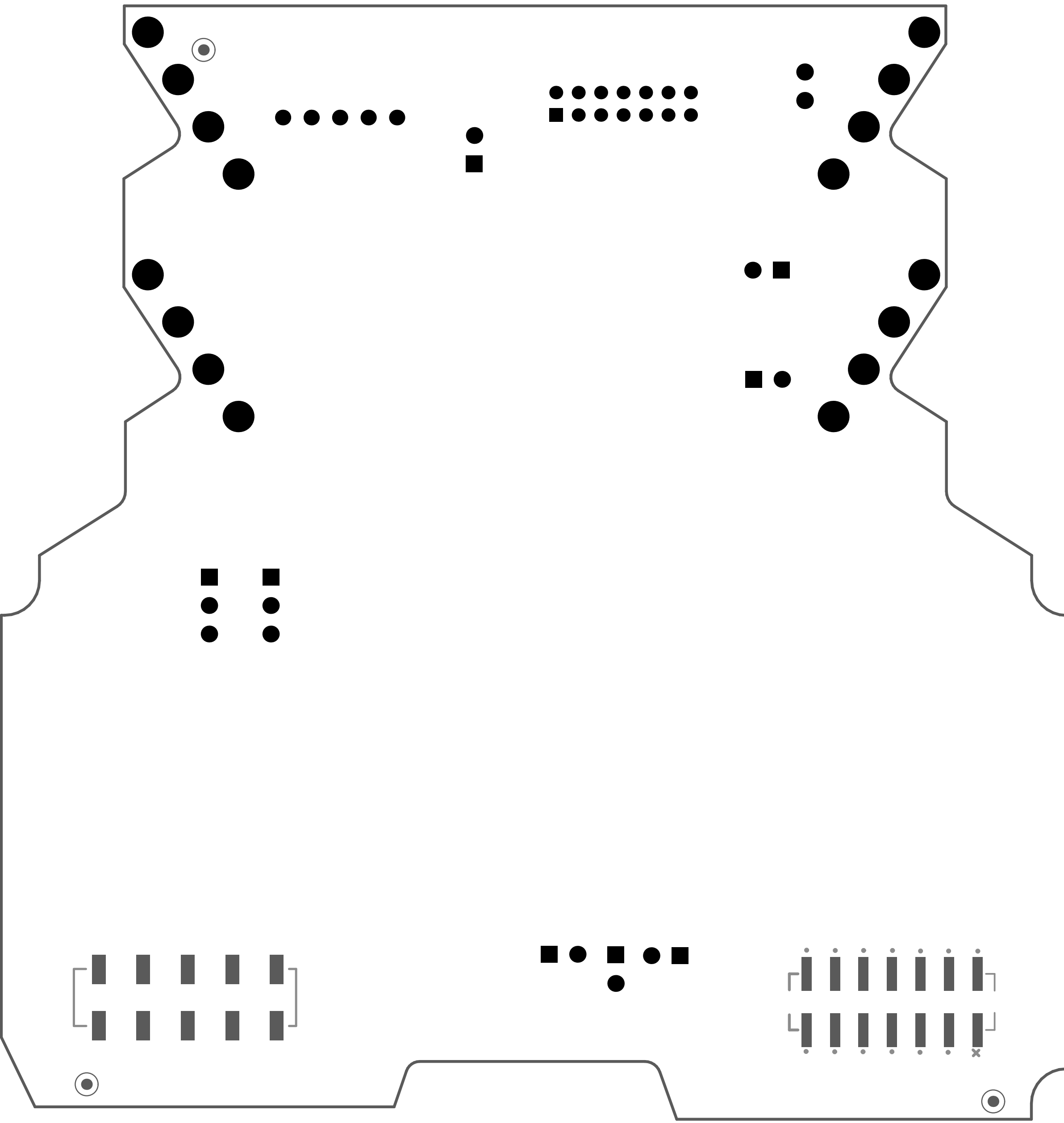
Canal de Isabel II

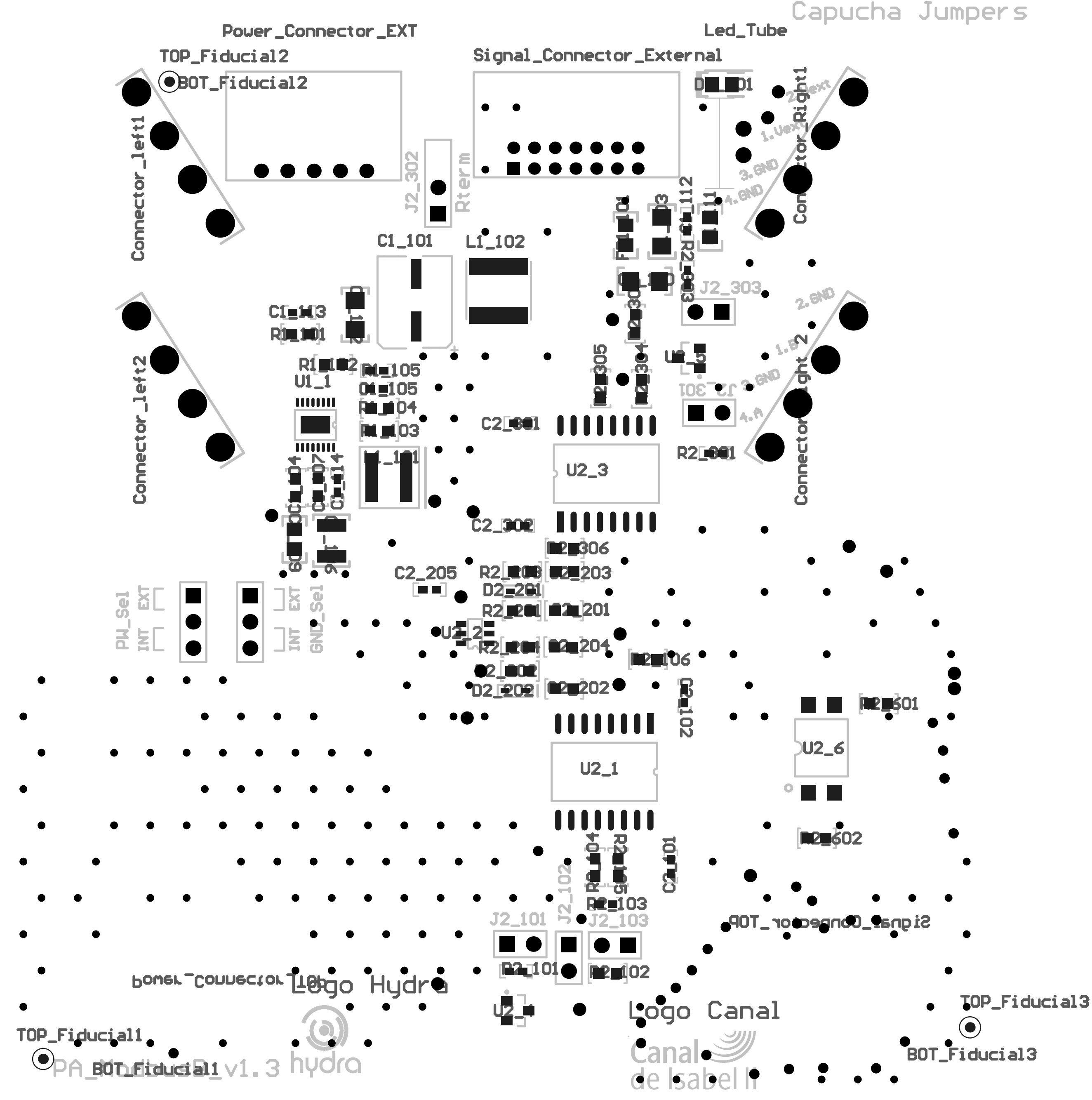
Fiducial3

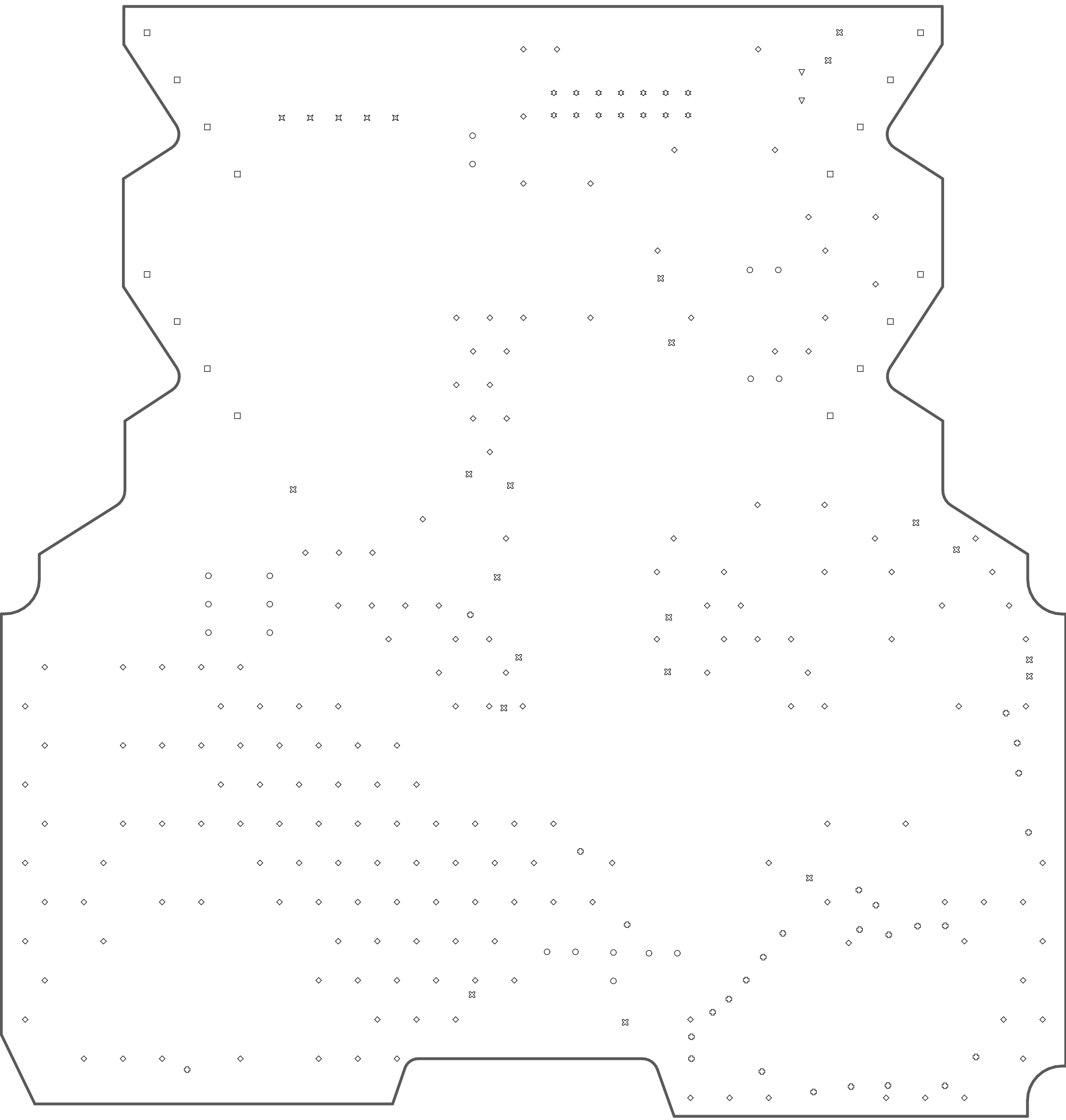
Fiducial3

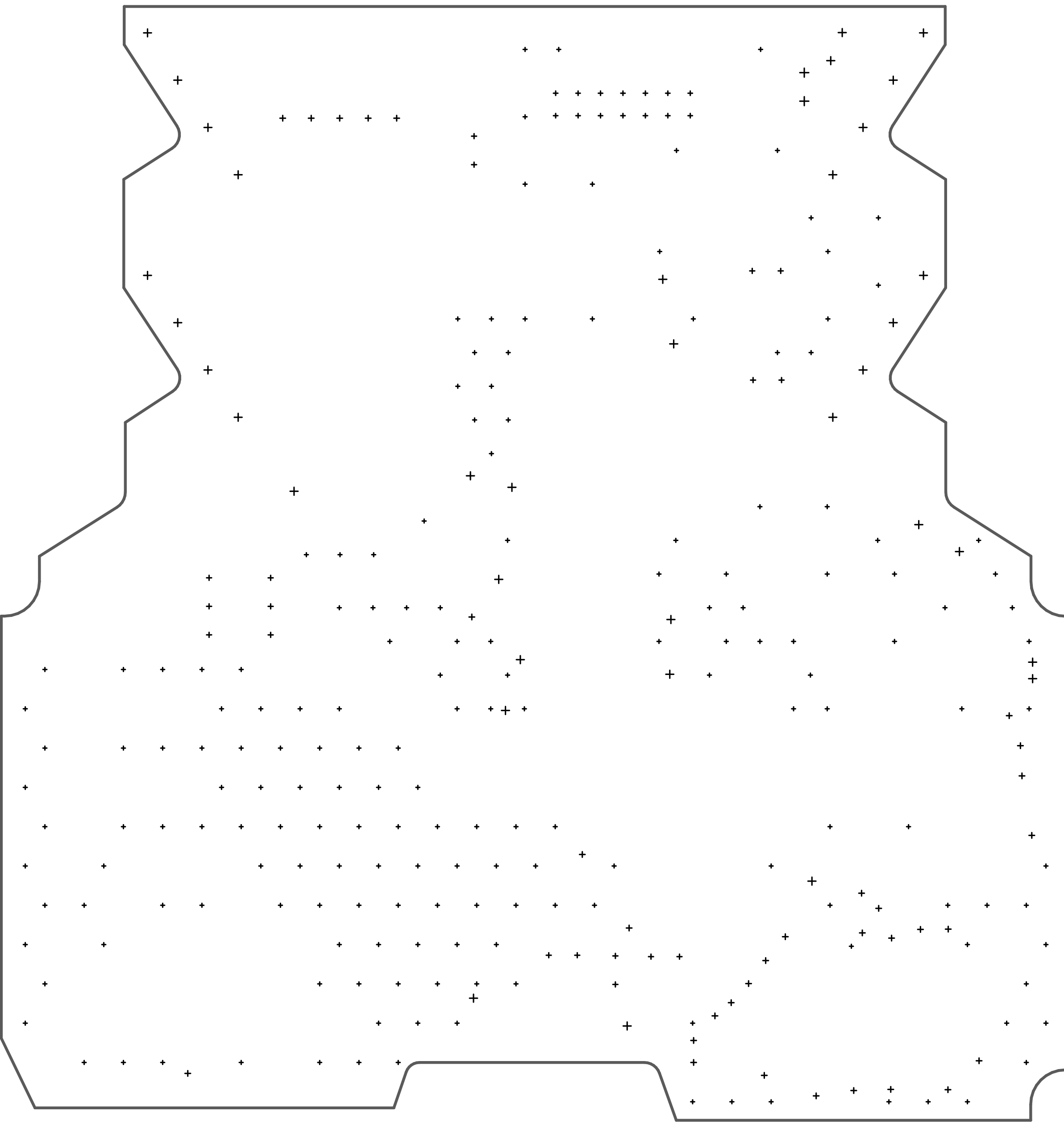


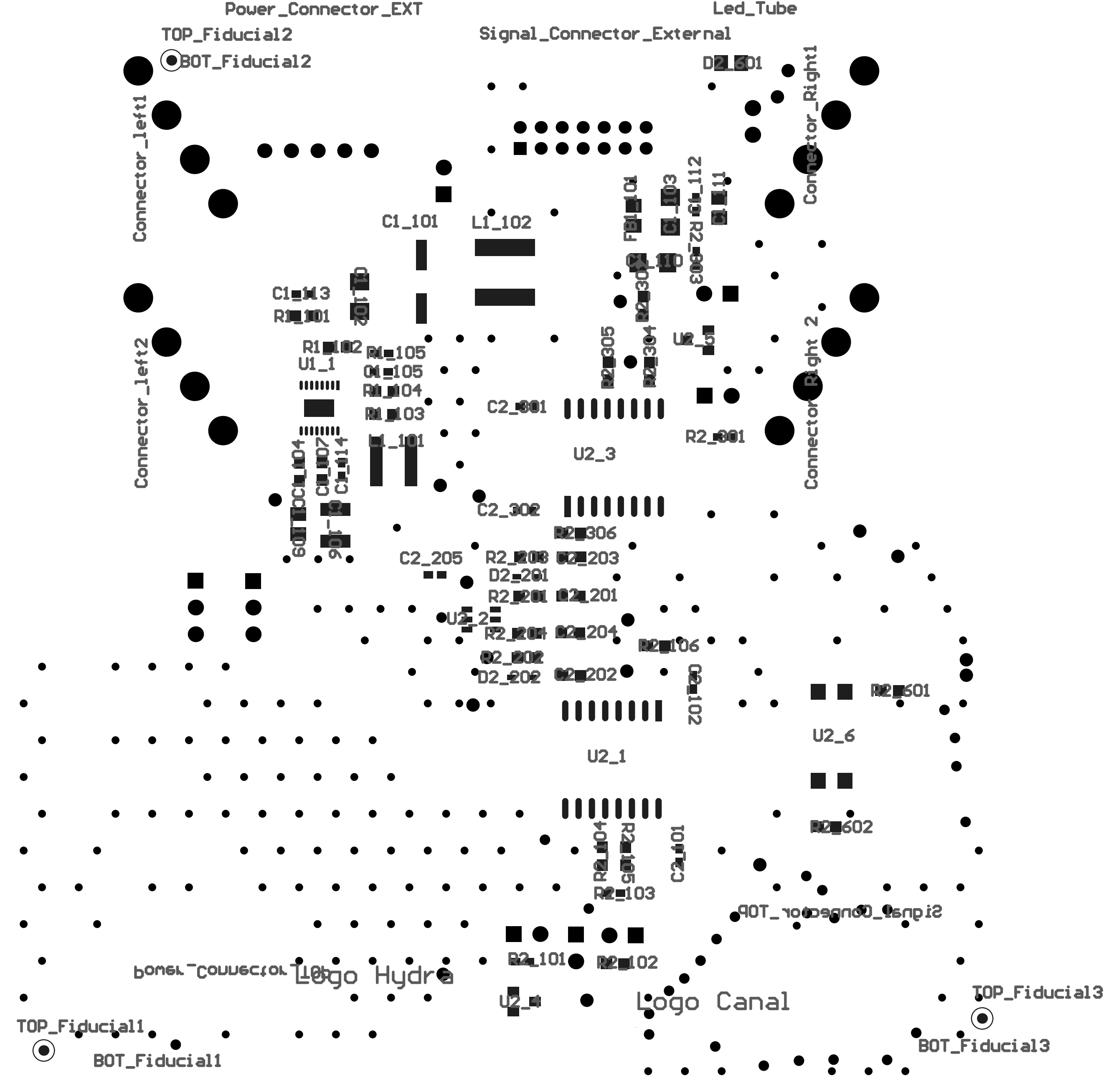












Designator	Comment	Description	Footprint	LibRef	Quantity
BOT_Fiducial1, BOT_Fiducial2, BOT_Fiducial3	Fiducial	Fiducial point	FIDUCIAL BOTTOM	Fiducial	3
C1_101	63V	CAP, ALUM 22µF 63V, SUN ELECT, 63CE22BS	CAP SMD 6.3(X7.7)	Cap Pol1	1
C1_102, C1_103, C1_110	50V 1206	CAP, X7R, 4.7µF, 50V, 10%, 1206, MURATA, GRM31CR71H475KA12L	1206	Cap	3
C1_104	16V	Cap Ceramic 16V 0.22uF 0603 X8L 10% C0603C224K4NACAUTO	0603	Cap	1
C1_105	Cap	CAP, COG, 10pF, 25V, 10%, 0402 C0402C100K3GACAUTO	0402	Cap	1
C1_106	10V 1210	CAP, X7R, 47µF, 10V, 10%, 1210, MURATA, GRM32ER71A476KE15L	1210	Cap	1
C1_107	Cap	CAP, X7R, 1µF, 25V, 10%, 0603, MURATA, GRM188R71E105KA12D	0603	Cap	1
C1_109	16V 0805	CAP, X7R, 4.7µF, 16V, 10%, 0805 CGA4J3X7R1C475K125AB	0805	Cap	1
C1_111	50V 0805	CAP, X7R, 1µF, 50V, 10%, 0805	0805	Cap	1
C1_112, C1_113, C1_114	50V 0402	CAP, X7R, 0.1µF, 50V, 10%, 0402	0402	Cap	3
C2_101, C2_102, C2_205, C2_301, C2_302	Cap	Cap 0.1uF 6.3 V 0402	0402	Cap	5
C2_201, C2_202, C2_203, C2_204	Cap	Cap 100pF 6.3V 0603 MLCC X7R	0603	Cap	4
Capucha Jumpers	Fiducial	REF: 60900213421	JUMPER Capucha	Fiducial	1
Connector Right 2, Connector_Right1	2907787	Phoenix contact MSTBO 2,5/ 4-G1R KMGY - 2907787 4 pines Right Position	Phoenix contact connector Right 2907787	Connector Phoenix contact 4 pines Right	2
Connector_left1, Connector_left2	2907774	Phoenix contact MSTBO 2,5/ 4-G1L KMGY - 2907774 4 pin left Caqrcasa pasamuros	Phoenix contact connector Left 2907774	Connector Phoenix contact MSTBO 2,5/ 4- G1L KMGY - 2907774 Left	2
D2_201, D2_202	1N4448WT	1N4448WT Diode	sod-523F	Diode 1N4001	2
D2_601	LED1	Green Standard Led Vf 2V If 20mA 0805 LTST-C170KGKT	0805 DIODO	LED1	1
FB1_101	Jumper 1x2	TDK, MPZ20125331AT000, 0805, ferrite bead	0805	Jumper 1x2	1
GND_Sel, PW_Sel	Jumper 3 way	header 3x1 2.54mm pitch	CON HEADER 3x1	Jumper 3 way	2
J2_101, J2_102, J2_103, J2_301, J2_303	Jumper 1x2	con header 2x1 2.54mm pitch	Con Header 2x1	Jumper 1x2	5
J2_302	Jumper 1x2	con header 2x1 2.54mm pitch	Con Header 2x1 Vertical Parallel	Jumper 1x2	1
L1_101	COILCRAFT, XAL5030- 222MEC	Inductores fijos 2.2uH 20% 9.7A 14.5mOhms AEC-Q200 COILCRAFT, XAL5030-222MEC	XAL5030-222MEC	Inductor	1
L1_102	Inductor	Inductores fijos 6028 4.7uH 40.3mOhms +/-20% Tol 2.7A NR6028T4R7M	NR6028T4R7M	Inductor	1
Led_Tube	2202315	Phoenix contact 2202315 tubo de LED HS LC-H-D3/ R2XC1-5,08	Phoenix contact tubo de led 2x1 2202315	tubo de LED 2x1 HS LC- H-D3/ R2XC1-5,08 2202315	1
Logo Canal	Fiducial	Fiducial point	Logo CYII Pequeño	Fiducial	1
Logo Hydra	Fiducial	Fiducial point	Logo Hydra Pequeño	Fiducial	1
Power_Connector_Ext	Powe Connector 5X1 SMD SAMTEC Housing 3.96 pitch	Conector de 5 pines SAMTEC IPL1-105-01-F-S-RE1	SAMTEC conector 5 pines IPL1-105-01-F-S- RE1	Powe Connector 5X1 SMD SAMTEC Housing 3.96 pitch	1
Power_Connector_Top	Powe Connector 5X1 SMD SAMTEC Housing 3.96 pitch	SAMTEC FHP-05-02-T-S 5pines 3.96 pitch housing	SAMTEC FHP-05-02-T- S 5pines 3.96 pitch housing	Powe Connector 5X1 SMD SAMTEC Housing 3.96 pitch	1
R1_101, R1_104	Res1	RES, CHIP, 1M, 1/10W, 1%, 0603, VISHAY, CRCW06031M00FKEA	0603	Res1	2
R1_102		RES, CHIP, 18.2k, 1/10W, 1%, 0603	0603	Res2	1
R1_103	Res1	RES, CHIP, 49.9k, 1/10W, 1%, 0603, VISHAY, CRCW060349K9FKEA	0603	Res1	1
R1_105	Res1	Res 243K 1% 0402 1/16W	0402	Res1	1
R2_101, R2_103, R2_301, R2_303	Res1	Res SMD 590 ohms 0402 1% 1/16	0402	Res1	4
R2_102, R2_302	Res1	Res 133 ohms 1% 1/10 0603	0603	Res1	2
R2_104, R2_105, R2_304, R2_305	Res1	Res 10ohms 0.1W 1% 0603	0603	Res1	4
R2_106, R2_306	Res1	Res 10kohms 0.1% 1/10W 0603	0603	Res1	2
R2_201, R2_202	Res1	Res SMD 51K Ohm 1% 1/10W 0603	0603	Res1	2
R2_203, R2_204	Res1	Res 300 ohms 1% 1/10 0603	0603	Res1	2
R2_601	Res1	Res 330 Ohm 1% 1/10W 0603	0603	Res1	1
R2_602	Res1	Res 1k8 1/4 Wat 1% 0603	0603	Res1	1
Signal_Connector_External		Conector de 14 pines SAMTEC T2M-107-01-L-D-RA	Samtec conector 14 pines T2M-107-01-L-D- RA	Header 7X2	1
Signal_Connector_Top	Signal Connector 7x2 SMD SAMTEC Male ciego 13	SAMTEC SSW-107-22-G-D-VS-013	SAMTEC 14 pines 13 blind housing SSW- 107-22-G-D-VS-013	Signal Connector 7x2 SMD SAMTEC Male ciego 13	1
TOP_Fiducial1, TOP_Fiducial2, TOP_Fiducial3	Fiducial	Fiducial point	FIDUCIAL TOP	Fiducial	3
U1_1	Power Regulator	Linear technology LT8610EMSE 42V, 2.5A Synchronous Step-Down Regulator with 2.5µA Quiescent Current	MSOP 16 Exposed Die Pad	LT8610EMSE	1
U2_1, U2_3	ISO3082DW		soic16	ISO3082DW	2
U2_2	SN74LVC2G14DBV		SOT23-6	SN74LVC2G14DBV	1
U2_4, U2_5	SM712	SM712	SOT23-3	SM712	2
U2_6	PC817X1NIP1B	Optoacoplador para salidas de transistor PC817X1NIP1B Sharp microelectronics	PC817X1NIP1B	PC817X1NIP1B	1