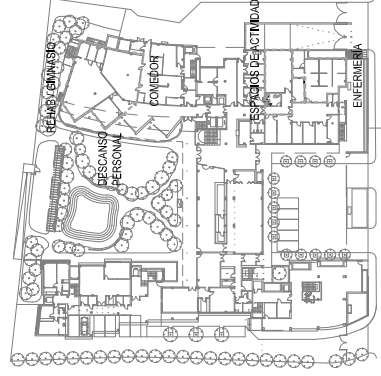
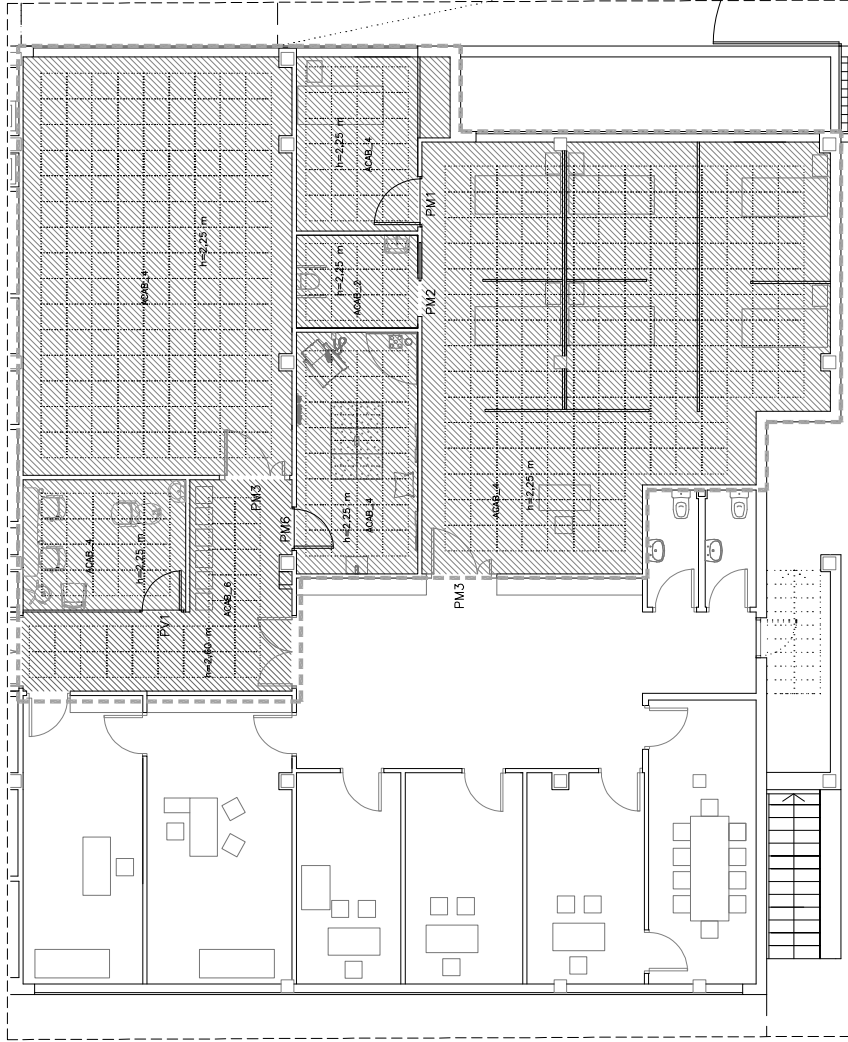


The floor plan shows a rectangular room with a hatched interior. The dimensions are indicated as  $h=2,60\text{ m}$  and the room is labeled **ACAB\_5**. The entrance is labeled **PRF4**. A small area near the entrance is labeled **PA1**. The room is connected to a larger area on the left, which contains a smaller room labeled **CABINA ACUSTICA 1400x1100**. The plan includes architectural details such as doors, windows, and a staircase at the top right.

[illegible][illegible]

[illegible]

**NOTA:** En paréntesis veredales, refutada preta de gual.











